

**SSLC RESULT ANALYSIS
2010-2011**

DISTRICT INSTITUTE OF EDUCATION AND TRAINING
DEPARTMENT OF EDUCATION
UT of LAKSHADWEEP

PREFACE

In the last couple of years, there has been a spurt of positive interventions in the educational scenario in Lakshadweep, resulting in a tangible improvement in the academic performance of the island students. Thus sagacious leadership of the Director of Education, Shri. A. Hamza, the timely interventions of the academic wing in the Directorate and the renewed spirit of the teaching community in all the islands have contributed to this heartening change.

The District Institute of Education and Training, Kavaratti has been making sincere efforts to bring about a substantial change in the quality of education in Lakshadweep. We have been conducting programmes intended for raising the pass percentage in the Board Examinations, especially in the X Class Examinations and simultaneously making concerted efforts to raise the quality of learning at different levels of School Education in close association with the SSA, Lakshadweep.

We are proud to bring out the publication, SSLC RESULT ANALYSIS 2010-2011, the first of its kind in Lakshadweep. The DIET faculties have completed the work in a short span of time in a commendable way.

Statistics always plays a pivotal role in formulation of plans and programmes and their execution, monitoring and evaluation. The qualitative and quantitative subject wise and school wise analysis of the SSLC Results of the 2010 and 2011 will be a useful source of reference for the Teachers, Heads of Educational institutions and other Educational authorities in Lakshadweep for drawing feedback and for moving ahead with meticulous planning and comprehensive programmes to achieve the goals.

CONTENT

S.No	TITLE	Pages
1	AT A GLANCE	2
2	Island wise Performance of the Schools, Graph and interpretations	5-40
2.1	Govt. S.S. SCHOOL AGATTI	5
2.2	Govt. S.S. SCHOOL AMINI	9
2.3	Govt. HIGH SCHOOL ANDROTH	13
2.4	Govt. S.S. SCHOOL CHETLATH	17
2.5	Govt. HIGH SCHOOL KADMAT	21
2.6	Govt. S.S. SCHOOL KALPENI	25
2.7	Govt. S.S. SCHOOL KAVARATTI	29
2.8	Govt. S.S. SCHOOL KILTAN	33
2.9	Govt. S.S. SCHOOL MINICOY	37
3	Subject wise Analysis, Graph and interpretations	41
4	Overall performance of Schools	48

1. AT A GLANCE

Island	Mar-10		Mar-11		2010	2011
	Appeared	Passed	Appeared	Passed	% of 2010	% of 2011
Agathi	152	102	114	82	67.11	71.93
Amini	187	77	148	112	41.18	75.68
Androth	217	168	228	192	77.42	84.21
Chetlath	47	31	27	24	65.96	88.89
Kadmat	106	80	118	95	75.47	80.51
Kalpeni	70	51	77	66	72.86	85.71
Kavarathi	135	115	155	115	85.19	74.19
Kiltan	69	43	65	58	62.32	89.23
Minicoy	158	111	121	95	70.25	78.51
Total	1141	778	1053	839	68.19	79.68

- No schools have scored 100% results
- Total number of candidates appeared march 2011 is less than 2010
- Quantity of pass percentage has increased in 2011 than in 2010
- Quantity of pass percentage has increased in all islands except Kavaratti and Androth (11% and 6.79% decrease)
- Kiltan has the highest pass percentage and Agatti has the lowest pass percentage in 2011 as far as quantity is concerned.
- GSSS Amini shows the highest increase in pass percentage (34.51%) in 2011 as compared to other islands.

2. ISLAND WISE PERFORMANCE OF SCHOOLS WITH GRAPHS AND INTERPRETATIONS

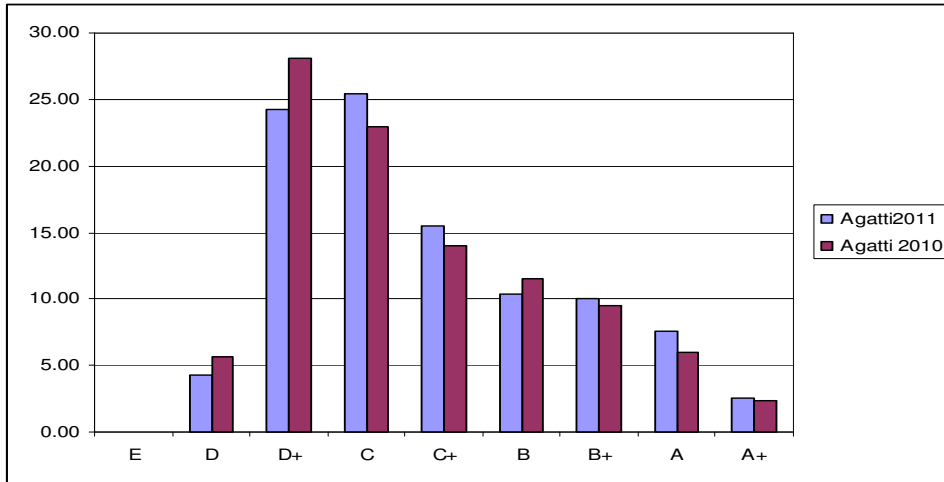
2.1 Govt. Sen. Sec. School AGATTI

MARCH 2010

Grade	E	D	D+	C	C+	B	B+	A	A+	Toatal
Ist Lang.	0	0	7	12	40	39	27	22	5	152
Il Lang.	0	1	21	21	28	25	24	17	15	152
Eng.	0	2	43	57	27	16	6	0	1	152
Hindi	0	1	18	58	34	26	8	5	2	152
S S	0	25	62	34	17	12	0	1	1	152
Phy.	0	12	66	45	18	9	1	0	1	152
Chem.	0	25	73	34	10	8	1	1	0	152
Bio.	0	6	68	44	17	10	6	1	0	152
Maths	0	14	68	44	20	4	1	1	0	152
IT	0	0	0	0	1	27	70	43	11	152
Total	0	86	426	349	212	176	144	91	36	1520

MARCH 2011

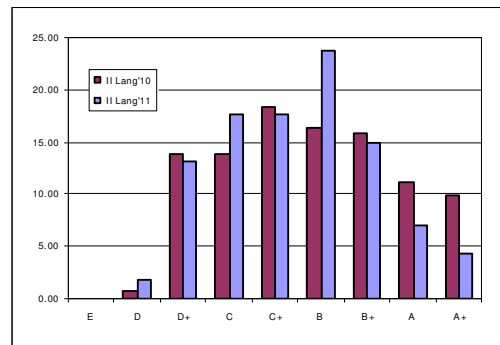
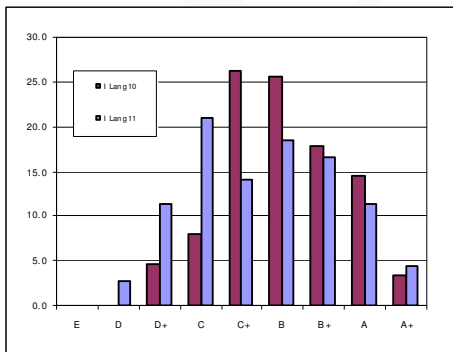
Grade	E	D	D+	C	C+	B	B+	A	A+	Total
Ist Lang.	0	3	13	24	16	21	19	13	5	114
Sec.Lang.	0	2	15	20	20	27	17	8	5	114
Eng.	0	1	47	35	21	4	3	2	1	114
Hindi	0	1	9	36	37	22	6	2	1	114
S S	0	15	60	19	9	7	3	1	0	114
Phy.	0	4	42	36	16	11	3	1	1	114
Chem.	0	4	31	46	14	11	5	1	2	114
Bio.	0	1	18	42	29	9	8	4	3	114
Maths	0	18	41	32	15	5	3	0	0	114
IT	0	0	0	0	0	1	47	55	11	114
Total	0	49	276	290	177	118	114	87	29	1140



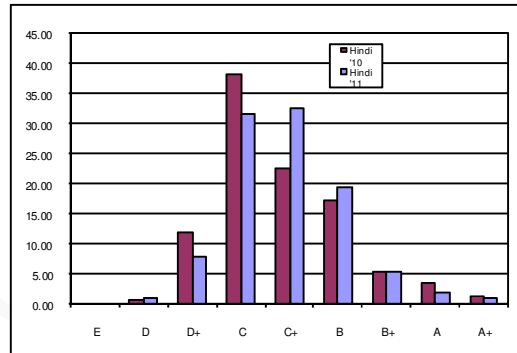
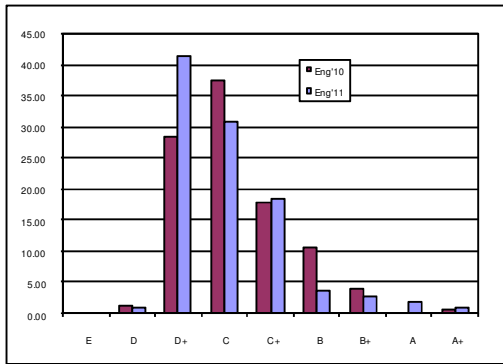
- The number of candidates appeared in 2011 is less than that in 2010
- This graph shows school performance in 2010 and 2011
- X-axis in this graph shows grade and Y-axis shows percentage of total number of each grade
- D and D+ grade decreased and all other higher grades except B have increased in 2011. It indicates that the quality of the result is increased as compared to 2010.
- D+ grade (30-39 marks) was higher in 2010 while C grade (40-49 marks) is higher in 2011. It also shows the increase in quality.
- Pass percentage has increased by 4.82 in 2011 as compared to 2010

SUBJECT WISE PERCENTAGE OF TOTAL GRADES

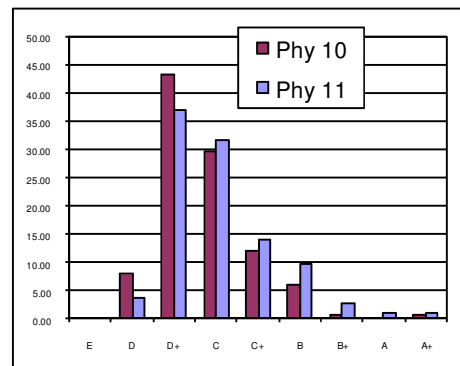
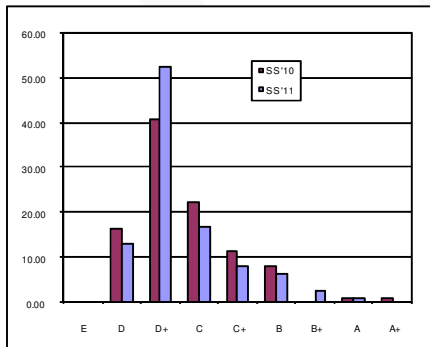
Grade	E	D	D+	C	C+	B	B+	A	A+
I Lang 10	0.00	0.00	4.61	7.89	26.32	25.66	17.76	14.47	3.29
I Lang 11	0.00	2.63	11.40	21.05	14.04	18.42	16.67	11.40	4.39
II Lang'10	0.00	0.66	13.82	13.82	18.42	16.45	15.79	11.18	9.87
II Lang'11	0.00	1.75	13.16	17.54	17.54	23.68	14.91	7.02	4.39



Grade	E	D	D+	C	C+	B	B+	A	A+
Eng'10	0.00	1.32	28.29	37.50	17.76	10.53	3.95	0.00	0.66
Eng'11	0.00	0.88	41.23	30.70	18.42	3.51	2.63	1.75	0.88
Hindi '10	0.00	0.66	11.84	38.16	22.37	17.11	5.26	3.29	1.32
Hindi '11	0.00	0.88	7.89	31.58	32.46	19.30	5.26	1.75	0.88

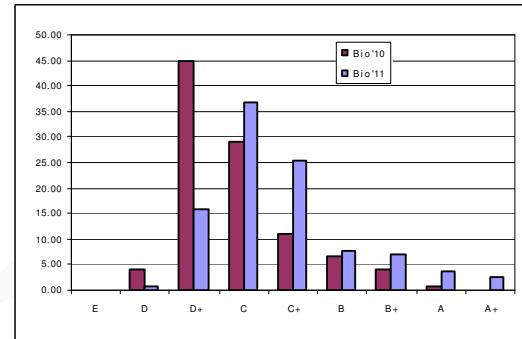
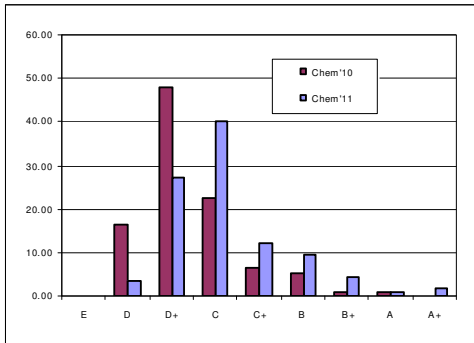


Grade	E	D	D+	C	C+	B	B+	A	A+
SS '10	0.00	16.45	40.79	22.37	11.18	7.89	0.00	0.66	0.66
SS '11	0.00	13.16	52.63	16.67	7.89	6.14	2.63	0.88	0.00
Phy 10	0.00	7.89	43.42	29.61	11.84	5.92	0.66	0.00	0.66
Phy 11	0.00	3.51	36.84	31.58	14.04	9.65	2.63	0.88	0.88

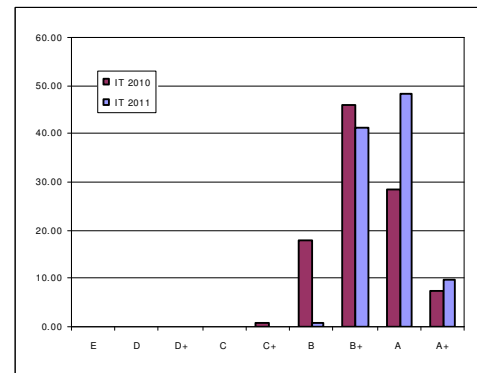
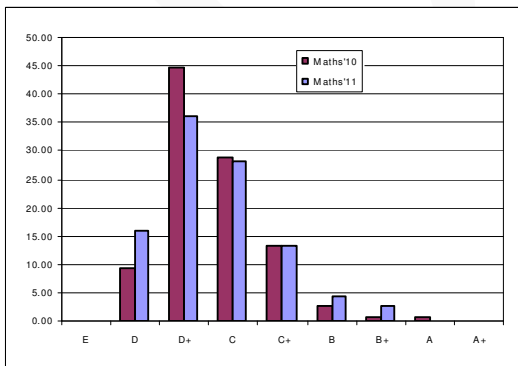


SSLC RESULT ANALYSIS 2010-211

Grade	E	D	D+	C	C+	B	B+	A	A+
Chem '10	0.00	16.45	48.03	22.37	6.58	5.26	0.66	0.66	0.00
Chem '11	0.00	3.51	27.19	40.35	12.28	9.65	4.39	0.88	1.75
Bio '10	0.00	3.95	44.74	28.95	11.18	6.58	3.95	0.66	0.00
Bio '11	0.00	0.88	15.79	36.84	25.44	7.89	7.02	3.51	2.63



Grade	E	D	D+	C	C+	B	B+	A	A+
Maths'10	0.00	9.21	44.74	28.95	13.16	2.63	0.66	0.66	0.00
Maths'11	0.00	15.79	35.96	28.07	13.16	4.39	2.63	0.00	0.00
IT 2010	0.00	0.00	0.00	0.00	0.66	17.76	46.05	28.29	7.24
IT 2011	0.00	0.00	0.00	0.00	0.00	0.88	41.23	48.25	9.65



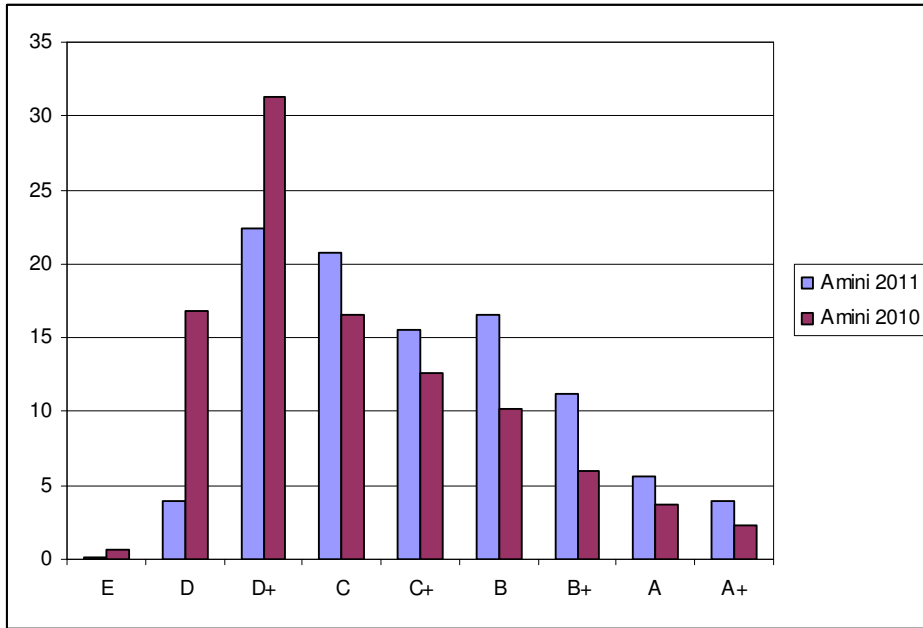
2.2 Govt. Sen. Sec. School AMINI

MARCH 2010

	E	D	D+	C	C+	B	B+	A	A+	Total
Ist Lang.	0	1	25	42	43	31	26	10	9	187
II Lang.	0	4	33	37	28	29	16	25	15	187
Eng.	0	19	83	38	31	11	4	1	0	187
Hindi	0	10	53	61	29	19	8	3	4	187
S S	9	65	59	20	15	9	4	5	1	187
Phy.	0	40	94	25	16	8	2	2	0	187
Chem.	1	84	65	20	9	3	5	0	0	187
Bio.	2	38	89	30	19	3	2	1	3	187
Maths	1	52	85	36	6	3	2	2	0	187
IT	0	0	0	0	40	74	42	21	10	187
Total	13	313	586	309	236	190	111	70	42	1870

MARCH 2011

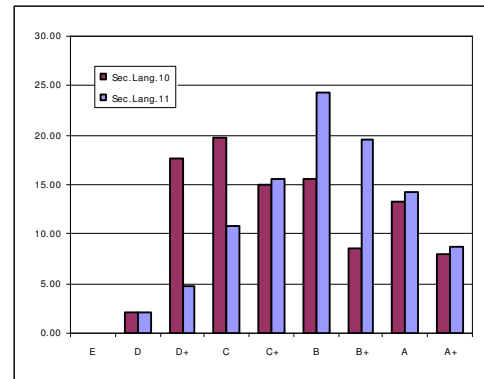
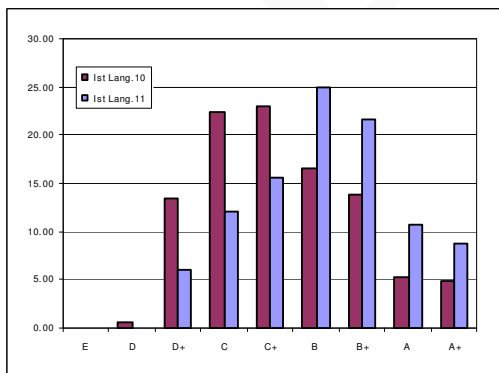
Grade	E	D	D+	C	C+	B	B+	A	A+	
Ist Lang.	0	0	9	18	23	37	32	16	13	148
Sec.Lang.	0	3	7	16	23	36	29	21	13	148
English	0	2	47	50	23	15	6	4	1	148
Hindi	0	1	15	41	34	29	16	6	6	148
S S	1	27	62	31	17	4	1	4	1	148
Phy.	0	1	25	39	30	29	15	5	4	148
Chem.	0	13	66	36	18	7	2	3	3	148
Bio.	0	2	33	38	30	24	12	4	5	148
Maths	0	10	68	38	22	3	5	1	1	148
IT	0	0	0	0	10	60	47	19	12	148
Total	1	59	332	307	230	244	165	83	59	1480



- The number of candidates appeared in 2011 is less than that of 2010
- D and D+ grade decreased and all other higher grades are increased in 2011. It indicates that the quality of the result is increased as compared to 2010.
- Pass percentage is increased by 34.51 in 2011 as compared to 2010.

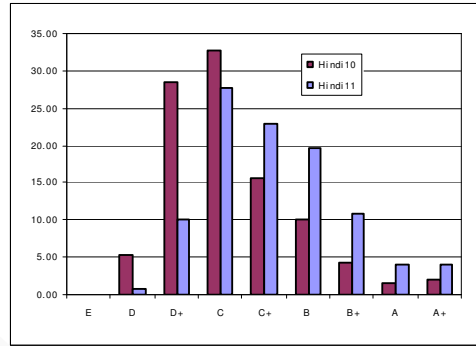
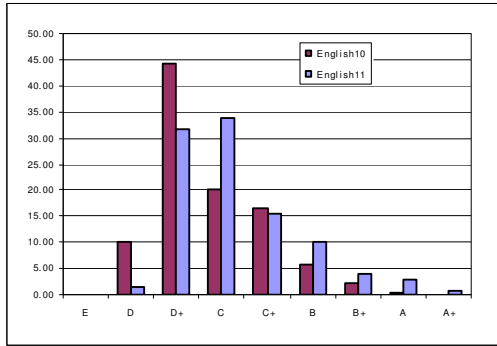
SUBJECT WISE PERCENTAGE OF TOTAL GRADES

Grade	E	D	D+	C	C+	B	B+	A	A+
Ist Lang.10	0.00	0.53	13.37	22.46	22.99	16.58	13.90	5.35	4.81
Ist Lang.11	0.00	0.00	6.08	12.16	15.54	25.00	21.62	10.81	8.78
Sec.Lang.10	0.00	2.14	17.65	19.79	14.97	15.51	8.56	13.37	8.02
Sec.Lang.11	0.00	2.03	4.73	10.81	15.54	24.32	19.59	14.19	8.78

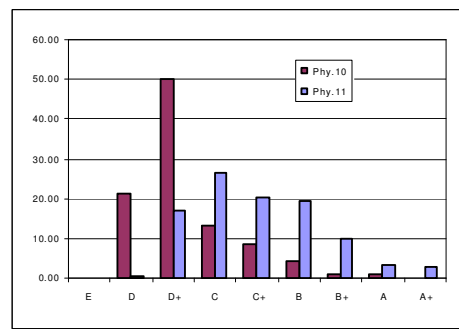
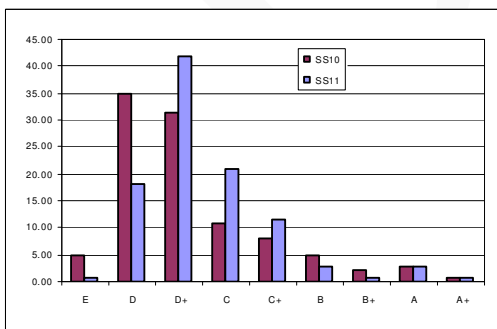


SSLC RESULT ANALYSIS 2010-211

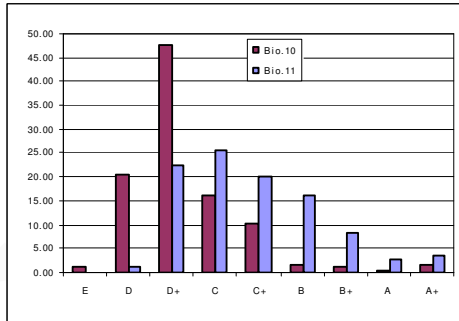
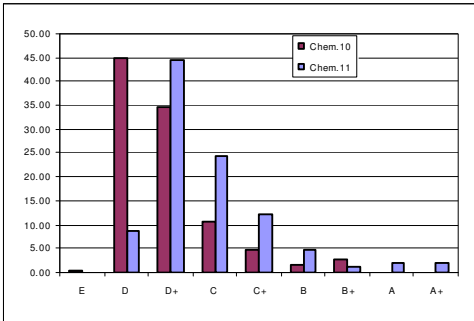
Grade	E	D	D+	C	C+	B	B+	A	A+
English10	0.00	10.16	44.39	20.32	16.58	5.88	2.14	0.53	0.00
English11	0.00	1.35	31.76	33.78	15.54	10.14	4.05	2.70	0.68
Hindi10	0.00	5.35	28.34	32.62	15.51	10.16	4.28	1.60	2.14
Hindi11	0.00	0.68	10.14	27.70	22.97	19.59	10.81	4.05	4.05



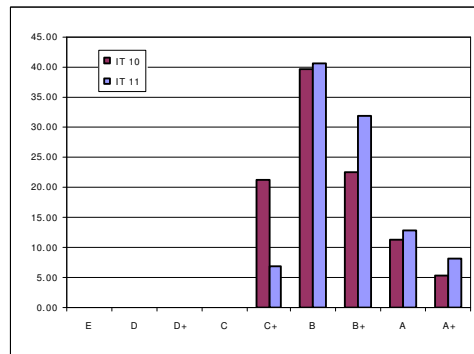
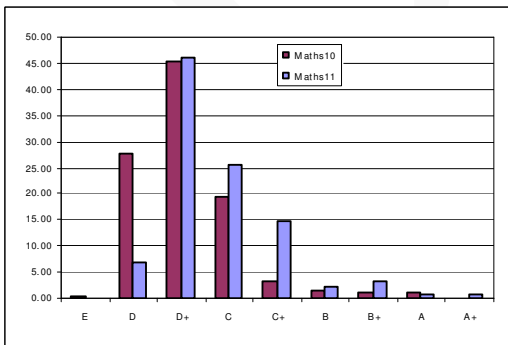
Grade	E	D	D+	C	C+	B	B+	A	A+
S S10	4.81	34.76	31.55	10.70	8.02	4.81	2.14	2.67	0.53
S S11	0.68	18.24	41.89	20.95	11.49	2.70	0.68	2.70	0.68
Phy.10	0.00	21.39	50.27	13.37	8.56	4.28	1.07	1.07	0.00
Phy.11	0.00	0.68	16.89	26.35	20.27	19.59	10.14	3.38	2.70



Grade	E	D	D+	C	C+	B	B+	A	A+
Chem.10	0.53	44.92	34.76	10.70	4.81	1.60	2.67	0.00	0.00
Chem.11	0.00	8.78	44.59	24.32	12.16	4.73	1.35	2.03	2.03
Bio.10	1.07	20.32	47.59	16.04	10.16	1.60	1.07	0.53	1.60
Bio.11	0.00	1.35	22.30	25.68	20.27	16.22	8.11	2.70	3.38



Grade	E	D	D+	C	C+	B	B+	A	A+
Maths10	0.53	27.81	45.45	19.25	3.21	1.60	1.07	1.07	0.00
Maths11	0.00	6.76	45.95	25.68	14.86	2.03	3.38	0.68	0.68
IT 10	0.00	0.00	0.00	0.00	21.39	39.57	22.46	11.23	5.35
IT 11	0.00	0.00	0.00	0.00	6.76	40.54	31.76	12.84	8.11



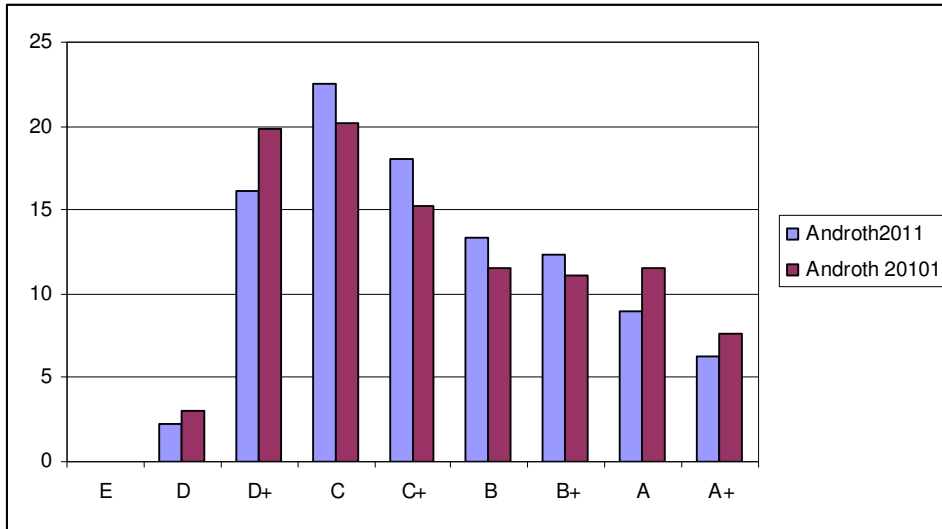
2.3 Govt. High School ANDROTH

MARCH 2010

	E	D	D+	C	C+	B	B+	A	A+	Total
Ist Lang.	0	0	5	15	30	37	36	41	53	217
II Lang.	0	0	5	18	27	38	39	61	29	217
Eng.	0	9	56	50	43	28	14	10	7	217
Hindi	0	0	17	36	60	46	24	23	11	217
S S	0	5	51	77	38	23	13	7	3	217
Phy.	0	17	57	62	37	20	13	8	3	217
Chem.	0	12	88	61	28	11	12	3	2	217
Bio.	0	5	50	64	45	29	13	8	3	217
Maths	0	18	101	54	22	10	7	3	2	217
IT	0	0	0	0	0	8	70	87	52	217
Total	0	66	430	437	330	250	241	251	165	2170

MARCH 2011

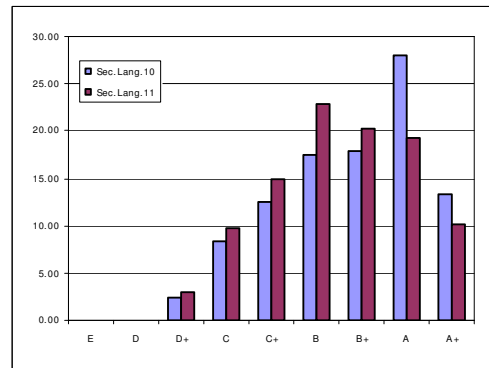
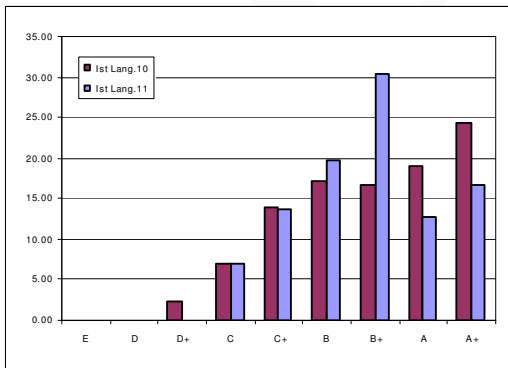
Grade	E	D	D+	C	C+	B	B+	A	A+	
Ist Lang.	0	0	0	16	31	45	69	29	38	228
Sec.Lang.	0	0	7	22	34	52	46	44	23	228
English	0	2	62	78	41	27	7	7	4	228
Hindi	0	0	7	36	75	55	35	16	4	228
S S	0	9	64	74	46	21	10	3	1	228
Phy.	0	11	48	65	61	23	12	8	0	228
Chem.	0	13	80	77	33	11	8	5	1	228
Bio.	0	0	34	69	50	35	18	13	9	228
Maths	0	17	66	78	41	15	9	1	1	228
IT	0	0	0	0	0	21	67	79	61	228
Total	0	52	368	515	412	305	281	205	142	2280



- Percentages of A grade and A+ grade have decreased as compared to 2010. It shows slight decrease in quality in 2011.
- Pass percentage is increased by 6.79 in 2011 as compared to 2010

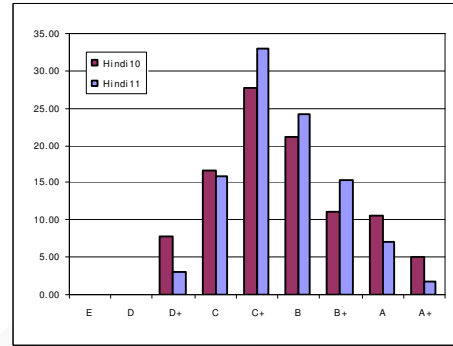
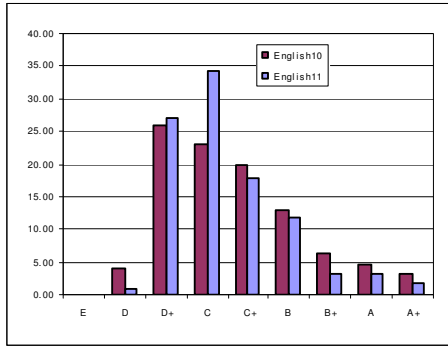
SUBJECT WISE PERCENTAGE OF TOTAL GRADES

Grade	E	D	D+	C	C+	B	B+	A	A+
Ist Lang.10	0.00	0.00	2.30	6.91	13.82	17.05	16.59	18.89	24.42
Ist Lang.11	0.00	0.00	0.00	7.02	13.60	19.74	30.26	12.72	16.67
Sec.Lang.10	0.00	0.00	2.30	8.29	12.44	17.51	17.97	28.11	13.36
Sec.Lang.11	0.00	0.00	3.07	9.65	14.91	22.81	20.18	19.30	10.09

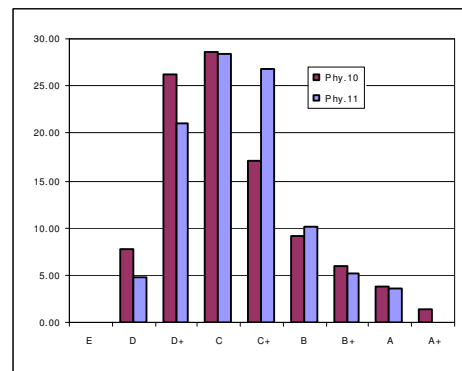
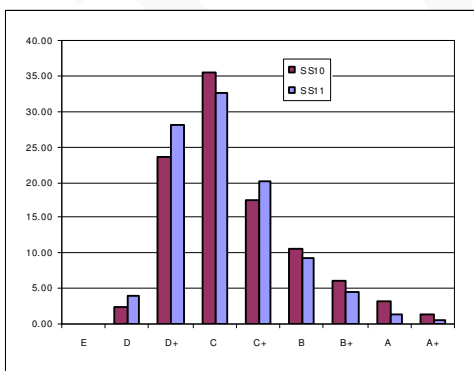


SSLC RESULT ANALYSIS 2010-211

Grade	E	D	D+	C	C+	B	B+	A	A+
English10	0.00	4.15	25.81	23.04	19.82	12.90	6.45	4.61	3.23
English11	0.00	0.88	27.19	34.21	17.98	11.84	3.07	3.07	1.75
Hindi10	0.00	0.00	7.83	16.59	27.65	21.20	11.06	10.60	5.07
Hindi11	0.00	0.00	3.07	15.79	32.89	24.12	15.35	7.02	1.75

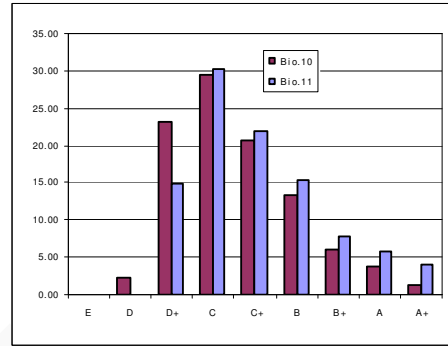
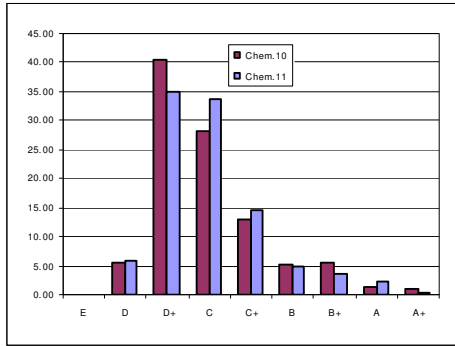


Grade	E	D	D+	C	C+	B	B+	A	A+
S S10	0.00	2.30	23.50	35.48	17.51	10.60	5.99	3.23	1.38
S S11	0.00	3.95	28.07	32.46	20.18	9.21	4.39	1.32	0.44
Phy.10	0.00	7.83	26.27	28.57	17.05	9.22	5.99	3.69	1.38
Phy.11	0.00	4.82	21.05	28.51	26.75	10.09	5.26	3.51	0.00

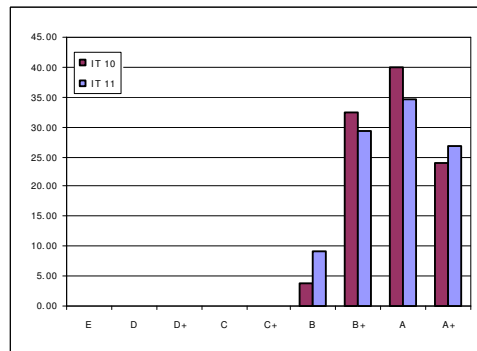
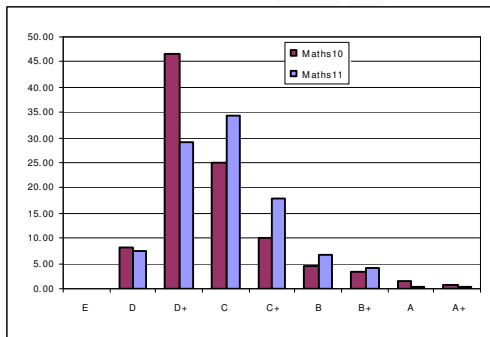


SSLC RESULT ANALYSIS 2010-211

Grade	E	D	D+	C	C+	B	B+	A	A+
Chem.10	0.00	5.53	40.55	28.11	12.90	5.07	5.53	1.38	0.92
Chem.11	0.00	5.70	35.09	33.77	14.47	4.82	3.51	2.19	0.44
Bio.10	0.00	2.30	23.04	29.49	20.74	13.36	5.99	3.69	1.38
Bio.11	0.00	0.00	14.91	30.26	21.93	15.35	7.89	5.70	3.95



Grade	E	D	D+	C	C+	B	B+	A	A+
Maths10	0.00	8.29	46.54	24.88	10.14	4.61	3.23	1.38	0.92
Maths11	0.00	7.46	28.95	34.21	17.98	6.58	3.95	0.44	0.44
IT 10	0.00	0.00	0.00	0.00	0.00	3.69	32.26	40.09	23.96
IT 11	0.00	0.00	0.00	0.00	0.00	9.21	29.39	34.65	26.75



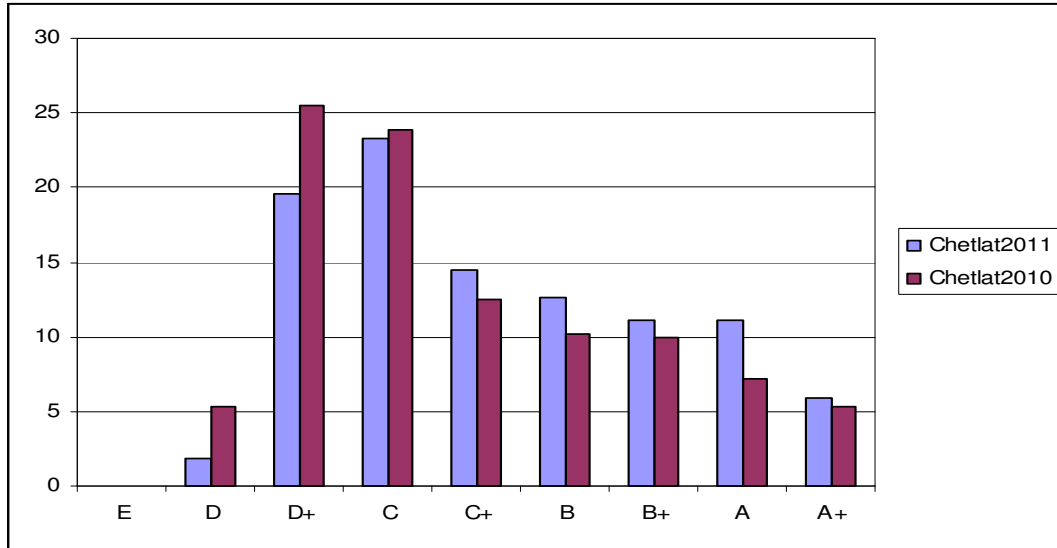
2.4 Govt. Sen. Sec. School CHETLATH

MARCH 2010

Grade	E	D	D+	C	C+	B	B+	A	A+	Total
Ist Lang.	0	0	0	3	5	13	14	5	7	47
II Lang.	0	0	2	6	7	13	9	8	2	47
Eng.	0	0	15	19	8	2	3	0	0	47
Hindi	0	1	6	20	8	6	4	1	1	47
S S	0	0	18	17	8	2	1	1	0	47
Phy.	0	9	19	9	6	4	0	0	0	47
Chem.	0	4	25	14	3	1	0	0	0	47
Bio.	0	1	11	16	11	5	2	1	0	47
Maths	0	10	24	8	3	2	0	0	0	47
IT	0	0	0	0	0	0	14	18	15	47
Total	0	25	120	112	59	48	47	34	25	470

MARCH 2011

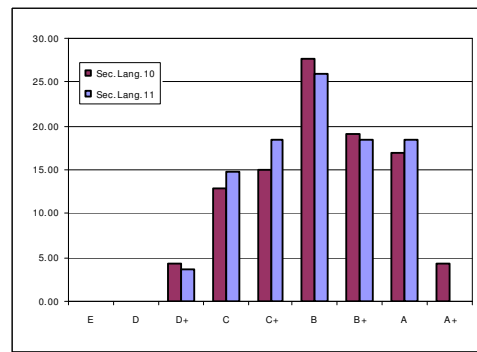
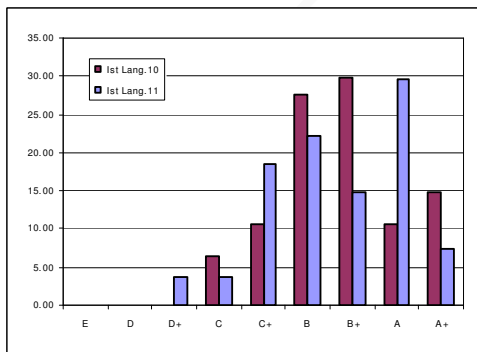
Grade	E	D	D+	C	C+	B	B+	A	A+	Total
Ist Lang.	0	0	1	1	5	6	4	8	2	27
Sec. Lang.	0	0	1	4	5	7	5	5	0	27
Eng. Total	0	1	7	9	4	4	2	0	0	27
Hindi	0	0	0	3	6	11	5	2	0	27
S S	0	0	9	7	6	2	1	0	2	27
Phy.	0	0	9	8	6	0	3	1	0	27
Chem.	0	2	11	12	0	2	0	0	0	27
Bio.	0	0	6	8	3	2	3	4	1	27
Maths	0	2	9	11	4	0	1	0	0	27
IT	0	0	0	0	0	0	6	10	11	27
Total	0	5	53	63	39	34	30	30	16	270



- Chetlat has second highest pass percentage in 2011 as far as quantity is concerned.
- The number of candidates appeared in 2011 is less than that in 2010
- Percentages of higher grades from C+ grade to A+ grade have increased as compared to 2010. It shows increase in quality in 2011.
- Pass percentage has increased by 22.93 in 2011 as compared to 2010
- D+ grade (30-39 marks) was higher in 2010 while C grade (40-49 marks) is higher in 2011. It also shows the increase in quality.

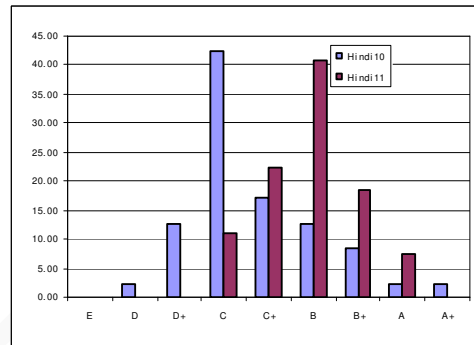
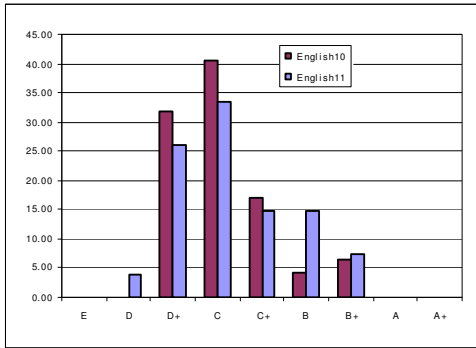
SUBJECT WISE PERCENTAGE OF TOTAL GRADES

Grade	E	D	D+	C	C+	B	B+	A	A+
Ist Lang.10	0.00	0.00	0.00	6.38	10.64	27.66	29.79	10.64	14.89
Ist Lang.11	0.00	0.00	3.70	3.70	18.52	22.22	14.81	29.63	7.41
Sec.Lang.10	0.00	0.00	4.26	12.77	14.89	27.66	19.15	17.02	4.26
Sec.Lang.11	0.00	0.00	3.70	14.81	18.52	25.93	18.52	18.52	0.00

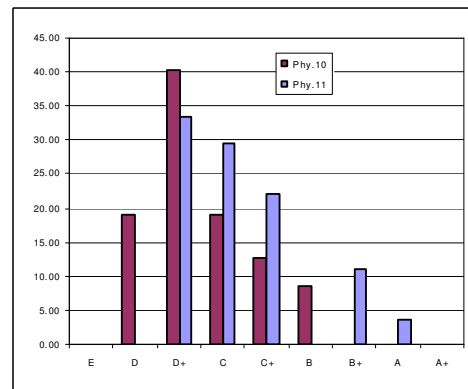
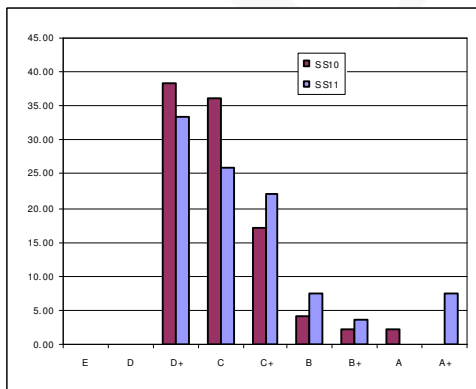


SSLC RESULT ANALYSIS 2010-211

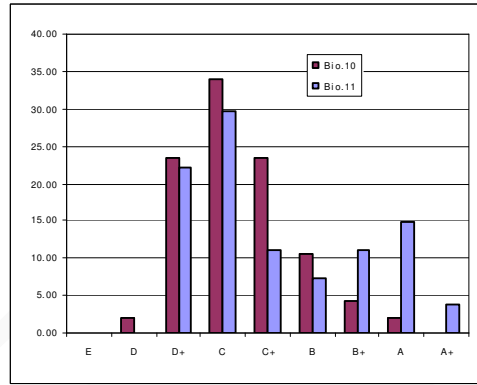
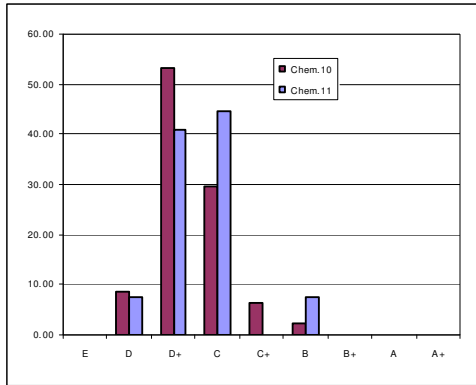
Grade	E	D	D+	C	C+	B	B+	A	A+
English10	0.00	0.00	31.91	40.43	17.02	4.26	6.38	0.00	0.00
English11	0.00	3.70	25.93	33.33	14.81	14.81	7.41	0.00	0.00
Hindi10	0.00	2.13	12.77	42.55	17.02	12.77	8.51	2.13	2.13
Hindi11	0.00	0.00	0.00	11.11	22.22	40.74	18.52	7.41	0.00



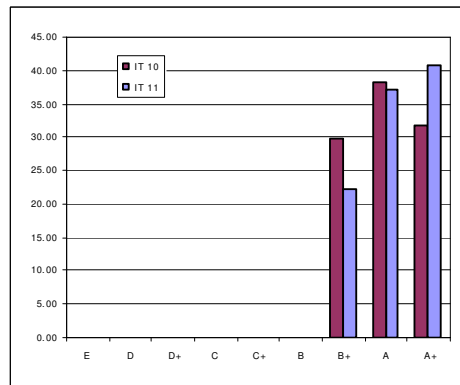
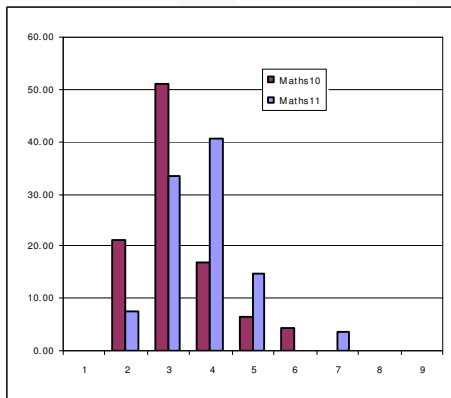
Grade	E	D	D+	C	C+	B	B+	A	A+
S S10	0.00	0.00	38.30	36.17	17.02	4.26	2.13	2.13	0.00
S S11	0.00	0.00	33.33	25.93	22.22	7.41	3.70	0.00	7.41
Phy.10	0.00	19.15	40.43	19.15	12.77	8.51	0.00	0.00	0.00
Phy.11	0.00	0.00	33.33	29.63	22.22	0.00	11.11	3.70	0.00



Grade	E	D	D+	C	C+	B	B+	A	A+
Chem.10	0.00	8.51	53.19	29.79	6.38	2.13	0.00	0.00	0.00
Chem.11	0.00	7.41	40.74	44.44	0.00	7.41	0.00	0.00	0.00
Bio.10	0.00	2.13	23.40	34.04	23.40	10.64	4.26	2.13	0.00
Bio.11	0.00	0.00	22.22	29.63	11.11	7.41	11.11	14.81	3.70



Grade	E	D	D+	C	C+	B	B+	A	A+
Maths10	0.00	21.28	51.06	17.02	6.38	4.26	0.00	0.00	0.00
Maths11	0.00	7.41	33.33	40.74	14.81	0.00	3.70	0.00	0.00
IT 10	0.00	0.00	0.00	0.00	0.00	0.00	29.79	38.30	31.91
IT 11	0.00	0.00	0.00	0.00	0.00	0.00	22.22	37.04	40.74



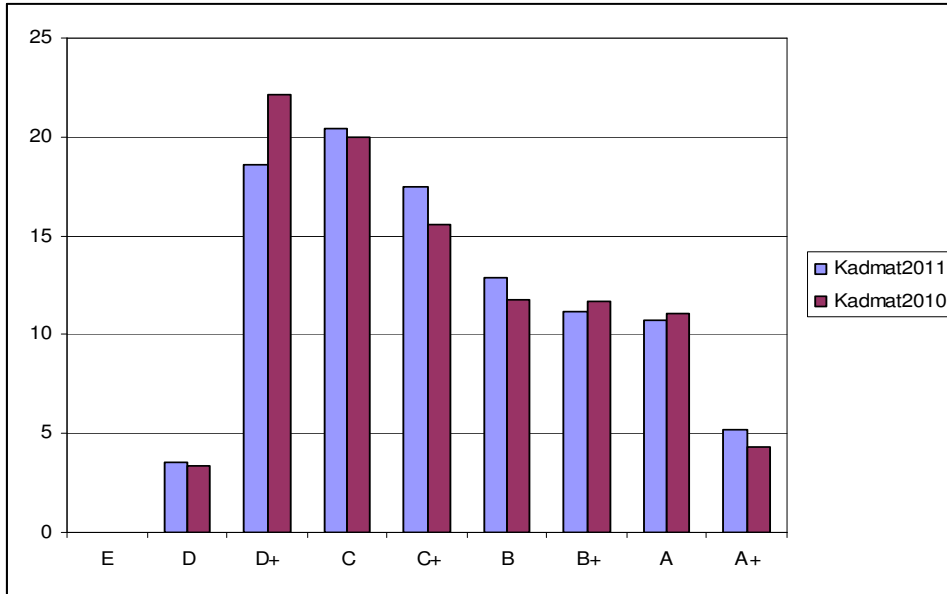
2.5 Govt. High School KADMATH

MARCH 2010

	E	D	D+	C	C+	B	B+	A	A+	Total
Ist Lang.	0	0	1	8	17	27	29	16	8	106
II Lang.	0	0	1	10	8	19	15	39	14	106
Eng.	0	1	26	27	27	13	9	2	1	106
Hindi	0	0	4	36	27	17	10	9	3	106
S S	0	4	30	28	16	12	13	1	2	106
Phy.	0	4	45	27	16	8	4	2	0	106
Chem.	0	15	51	25	10	3	1	1	0	106
Bio.	0	3	31	25	25	10	7	3	2	106
Maths	0	9	46	26	19	4	1	1	0	106
IT	0	0	0	0	0	12	35	43	16	106
Total	0	36	235	212	165	125	124	117	46	1060

MARCH 2011

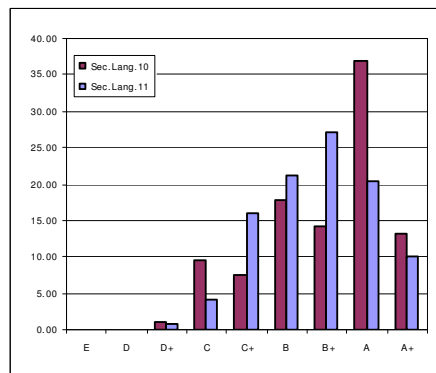
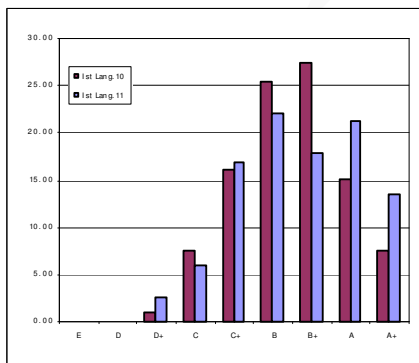
Grade	E	D	D+	C	C+	B	B+	A	A+	Total
Ist Lang.	0	0	3	7	20	26	21	25	16	118
Sec.Lang.	0	0	1	5	19	25	32	24	12	118
Eng.	0	5	42	32	23	9	3	3	1	118
Hindi	0	1	9	29	29	17	17	12	4	118
S S	0	6	47	39	16	5	2	3	0	118
Phy.	0	13	23	28	27	17	5	5	0	118
Chem.	0	2	37	44	22	6	3	2	2	118
Bio.	0	0	6	22	42	29	8	7	4	118
Maths	0	15	51	35	8	8	1	0	0	118
IT	0	0	0	0	0	10	40	46	22	118
Total	0	42	219	241	206	152	132	127	61	1180



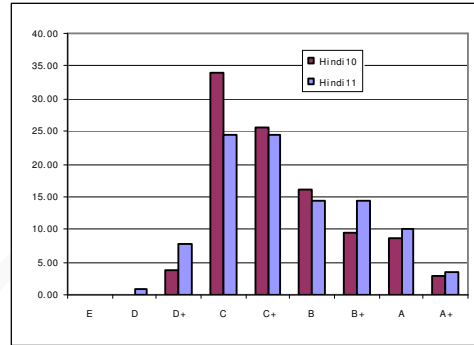
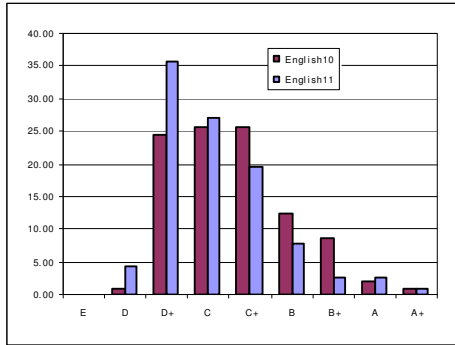
- Percentages of higher grades such as C, C+, B and A+ have increased as compared to 2010. It shows increase in quality in 2011.
- Pass percentage is increased by 5.04 in 2011 as compared to 2010
- D+ grade (30-39 marks) was higher in 2010 while C grade (40-49 marks) is higher in 2011. It also shows the increase in quality

SUBJECT WISE PERCENTAGE OF TOTAL GRADES

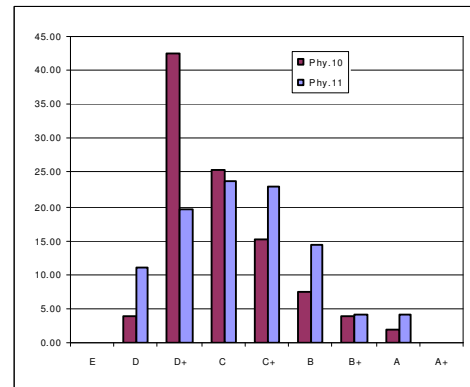
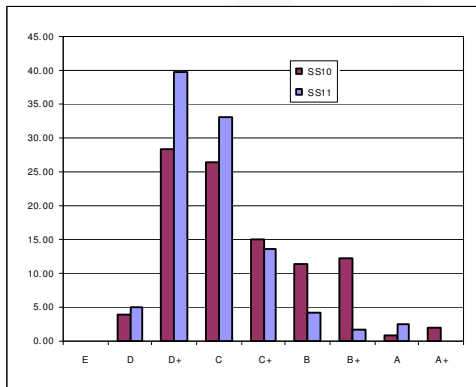
Grade	E	D	D+	C	C+	B	B+	A	A+
Ist Lang.10	0.00	0.00	0.94	7.55	16.04	25.47	27.36	15.09	7.55
Ist Lang.11	0.00	0.00	2.54	5.93	16.95	22.03	17.80	21.19	13.56
Sec.Lang.10	0.00	0.00	0.94	9.43	7.55	17.92	14.15	36.79	13.21
Sec.Lang.11	0.00	0.00	0.85	4.24	16.10	21.19	27.12	20.34	10.17



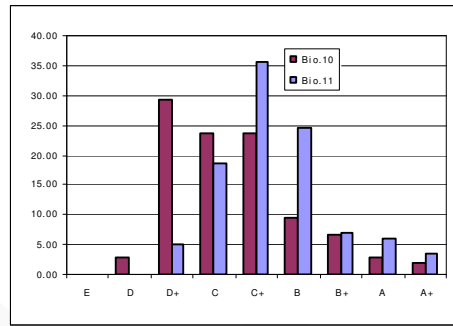
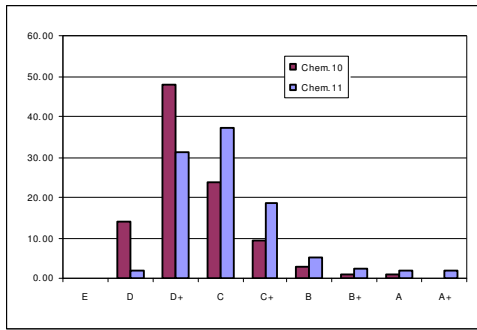
Grade	E	D	D+	C	C+	B	B+	A	A+
English10	0.00	0.94	24.53	25.47	25.47	12.26	8.49	1.89	0.94
English11	0.00	4.24	35.59	27.12	19.49	7.63	2.54	2.54	0.85
Hindi10	0.00	0.00	3.77	33.96	25.47	16.04	9.43	8.49	2.83
Hindi11	0.00	0.85	7.63	24.58	24.58	14.41	14.41	10.17	3.39



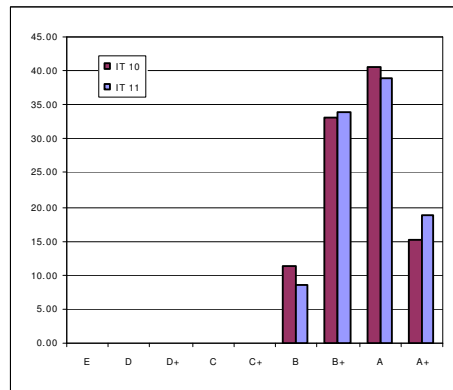
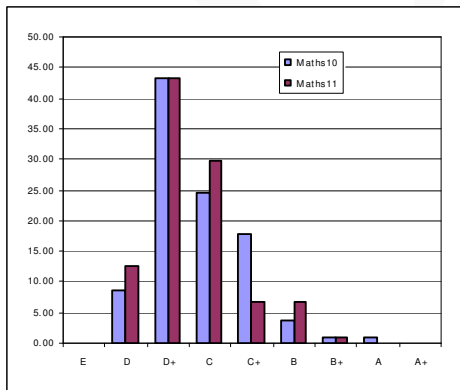
Grade	E	D	D+	C	C+	B	B+	A	A+
S S10	0.00	3.77	28.30	26.42	15.09	11.32	12.26	0.94	1.89
S S11	0.00	5.08	39.83	33.05	13.56	4.24	1.69	2.54	0.00
Phy.10	0.00	3.77	42.45	25.47	15.09	7.55	3.77	1.89	0.00
Phy.11	0.00	11.02	19.49	23.73	22.88	14.41	4.24	4.24	0.00



Grade	E	D	D+	C	C+	B	B+	A	A+
Chem.10	0.00	14.15	48.11	23.58	9.43	2.83	0.94	0.94	0.00
Chem.11	0.00	1.69	31.36	37.29	18.64	5.08	2.54	1.69	1.69
Bio.10	0.00	2.83	29.25	23.58	23.58	9.43	6.60	2.83	1.89
Bio.11	0.00	0.00	5.08	18.64	35.59	24.58	6.78	5.93	3.39



Grade	E	D	D+	C	C+	B	B+	A	A+
Maths10	0.00	8.49	43.40	24.53	17.92	3.77	0.94	0.94	0.00
Maths11	0.00	12.71	43.22	29.66	6.78	6.78	0.85	0.00	0.00
IT 10	0.00	0.00	0.00	0.00	0.00	11.32	33.02	40.57	15.09
IT 11	0.00	0.00	0.00	0.00	0.00	8.47	33.90	38.98	18.64



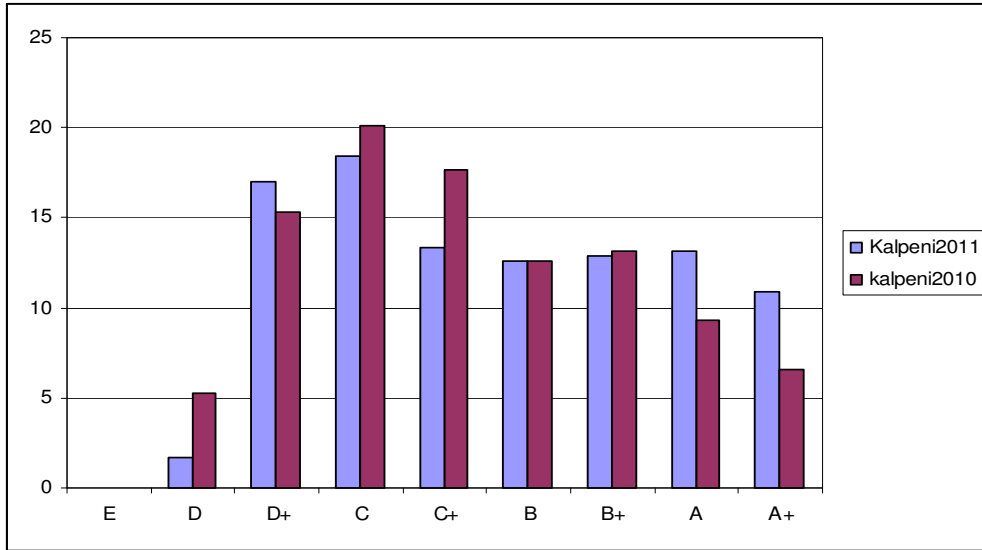
2.6 Dr.K.K.M.K Govt. Sen. Sec. School KALPENI

MARCH 2010

	E	D	D+	C	C+	B	B+	A	A+	Total
Ist Lang.	0	0	0	9	12	14	12	16	7	70
Il Lang.	0	1	1	3	10	12	15	16	12	70
Eng.	0	2	11	17	16	8	11	3	2	70
Hindi	0	0	2	14	26	10	11	6	1	70
S S	0	5	32	12	9	7	4	1	0	70
Phy.	0	10	22	16	9	7	4	1	1	70
Chem.	0	14	10	15	15	6	4	4	2	70
Bio.	0	1	9	27	15	4	5	3	6	70
Maths	0	4	20	28	9	7	1	1	0	70
IT	0	0	0	0	3	13	25	14	15	70
Total	0	37	107	141	124	88	92	65	46	700

MARCH 2011

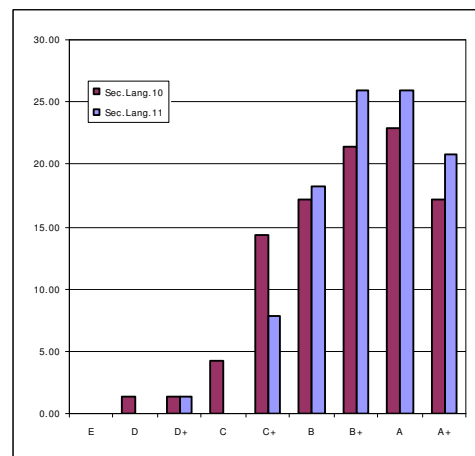
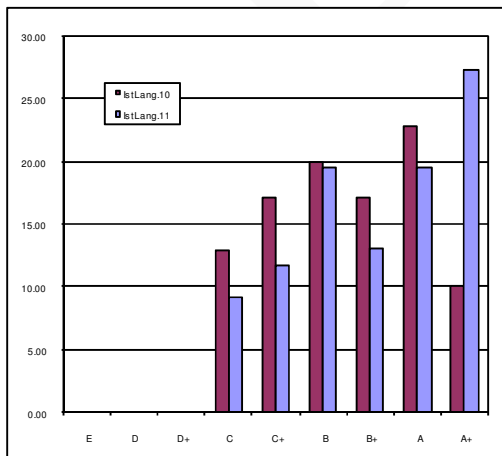
Grade	E	D	D+	C	C+	B	B+	A	A+	Total
Ist Lang.	0	0	0	7	9	15	10	15	21	77
Sec. Lang.	0	0	1	0	6	14	20	20	16	77
Eng.	0	0	26	20	10	6	8	7	0	77
Hindi	0	0	1	12	15	16	16	5	12	77
S S	0	10	29	13	10	10	4	1	0	77
Phy.	0	0	14	19	22	8	5	6	3	77
Chem.	0	1	38	18	7	6	3	4	0	77
Bio.	0	0	8	20	12	12	4	9	12	77
Maths	0	2	14	33	12	6	5	5	0	77
IT	0	0	0	0	0	4	24	29	20	77
Total	0	13	131	142	103	97	99	101	84	770



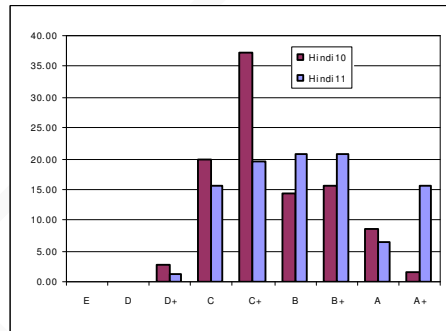
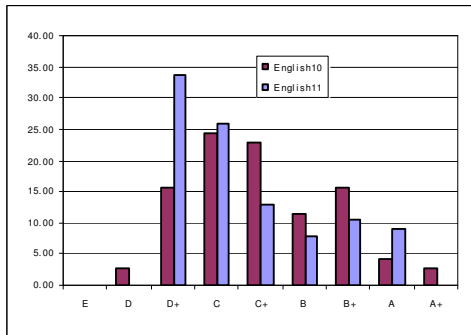
- Percentages of higher grades such as A and A+ have significantly increased as compared to 2010. It shows increase in quality in 2011.
- Pass percentage is increased by 12.85 in 2011 as compared to 2010
- C grade (40-49 marks) is higher in 2010 and 2011.

SUBJECT WISE PERCENTAGE OF TOTAL GRADES

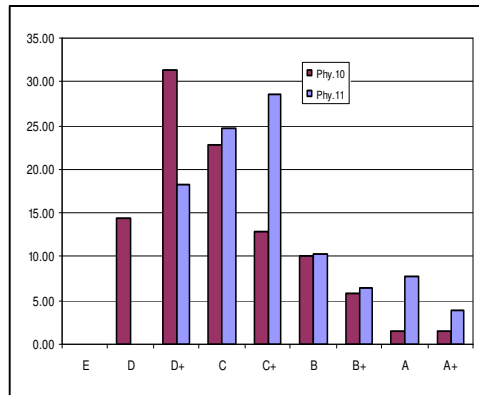
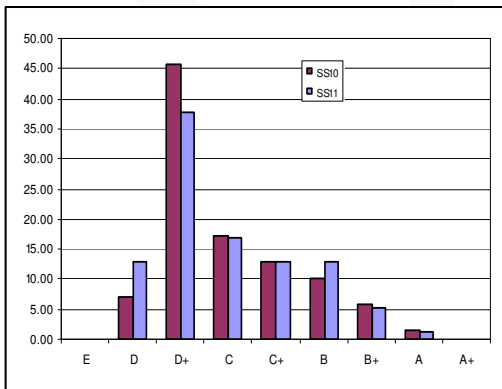
Grade	E	D	D+	C	C+	B	B+	A	A+
Ist Lang.10	0.00	0.00	0.00	12.86	17.14	20.00	17.14	22.86	10.00
Ist Lang.11	0.00	0.00	0.00	9.09	11.69	19.48	12.99	19.48	27.27
Sec.Lang.10	0.00	1.43	1.43	4.29	14.29	17.14	21.43	22.86	17.14
Sec.Lang.11	0.00	0.00	1.30	0.00	7.79	18.18	25.97	25.97	20.78



Grade	E	D	D+	C	C+	B	B+	A	A+
English10	0.00	2.86	15.71	24.29	22.86	11.43	15.71	4.29	2.86
English11	0.00	0.00	33.77	25.97	12.99	7.79	10.39	9.09	0.00
Hindi10	0.00	0.00	2.86	20.00	37.14	14.29	15.71	8.57	1.43
Hindi11	0.00	0.00	1.30	15.58	19.48	20.78	20.78	6.49	15.58

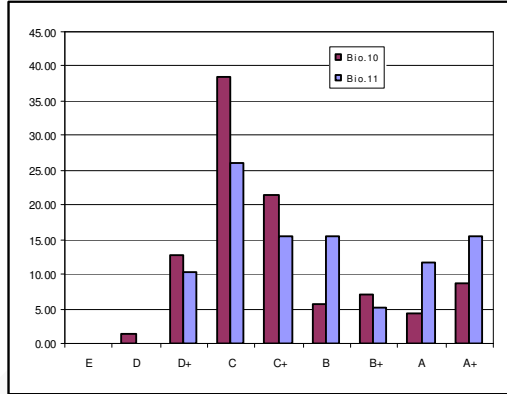
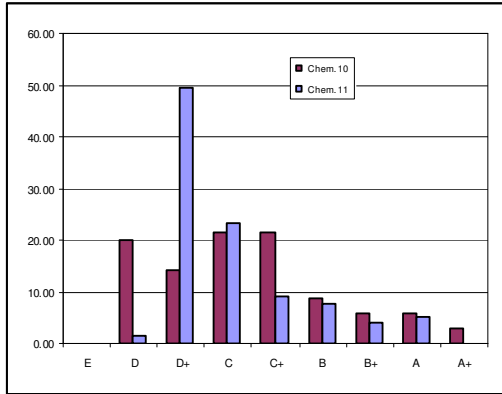


Grade	E	D	D+	C	C+	B	B+	A	A+
S S10	0.00	7.14	45.71	17.14	12.86	10.00	5.71	1.43	0.00
S S11	0.00	12.99	37.66	16.88	12.99	12.99	5.19	1.30	0.00
Phy.10	0.00	14.29	31.43	22.86	12.86	10.00	5.71	1.43	1.43
Phy.11	0.00	0.00	18.18	24.68	28.57	10.39	6.49	7.79	3.90

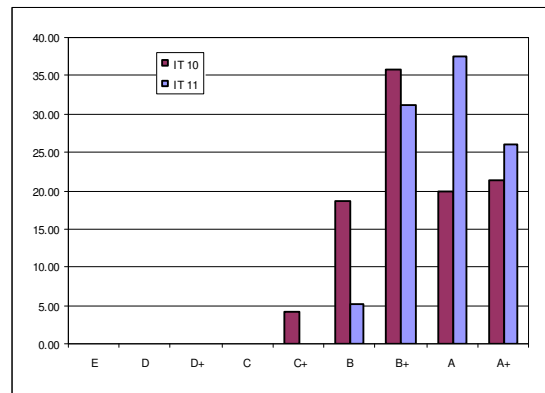
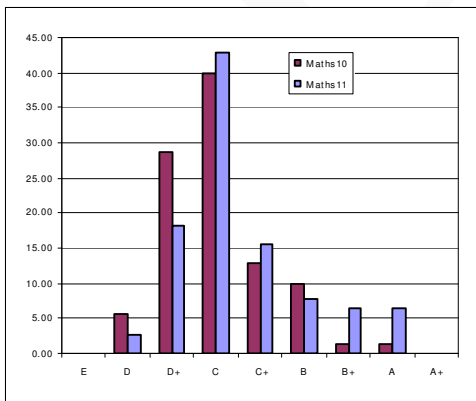


SSLC RESULT ANALYSIS 2010-211

Grade	E	D	D+	C	C+	B	B+	A	A+
Chem.10	0.00	20.00	14.29	21.43	21.43	8.57	5.71	5.71	2.86
Chem.11	0.00	1.30	49.35	23.38	9.09	7.79	3.90	5.19	0.00
Bio.10	0.00	1.43	12.86	38.57	21.43	5.71	7.14	4.29	8.57
Bio.11	0.00	0.00	10.39	25.97	15.58	15.58	5.19	11.69	15.58



Grade	E	D	D+	C	C+	B	B+	A	A+
Maths10	0.00	5.71	28.57	40.00	12.86	10.00	1.43	1.43	0.00
Maths11	0.00	2.60	18.18	42.86	15.58	7.79	6.49	6.49	0.00
IT 10	0.00	0.00	0.00	0.00	4.29	18.57	35.71	20.00	21.43
IT 11	0.00	0.00	0.00	0.00	0.00	5.19	31.17	37.66	25.97



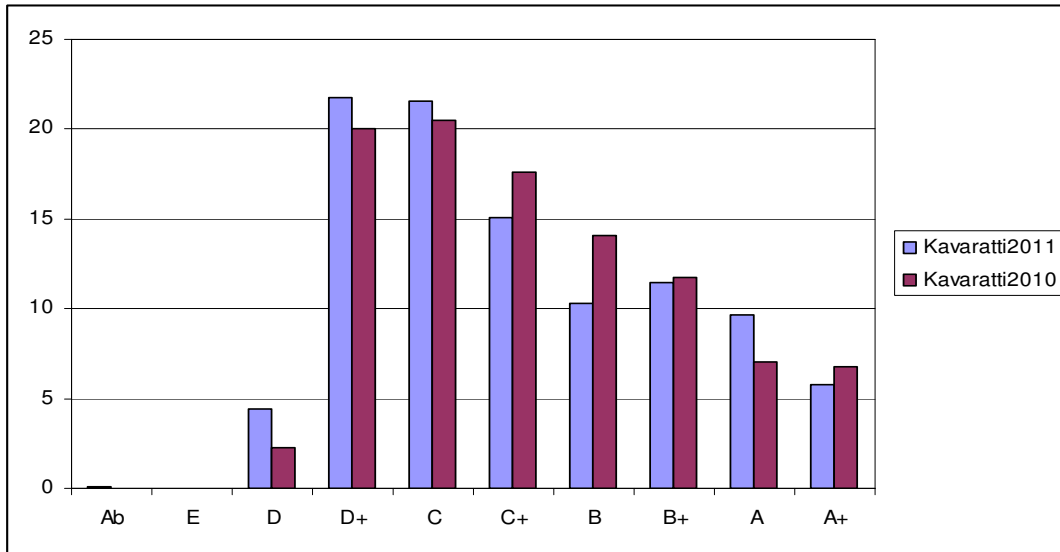
2.7 Govt. Sen. Sec. School KAVARATTI

MARCH 2010

	E	D	D+	C	C+	B	B+	A	A+	Total
Ist Lang.	0	0	4	27	27	26	20	16	15	135
II Lang.	0	0	8	10	21	26	31	23	16	135
Eng.	0	1	20	33	32	29	18	1	1	135
Hindi	0	0	4	41	35	21	17	11	6	135
S S	0	5	41	29	33	16	7	4	0	135
Phy.	0	6	41	39	20	18	8	2	1	135
Chem.	0	6	64	23	15	13	10	4	0	135
Bio.	0	3	25	40	36	21	5	4	1	135
Maths	0	9	64	35	15	6	5	1	0	135
IT	0	0	0	0	4	14	37	29	51	135
Total	0	30	271	277	238	190	158	95	91	1350

MARCH 2011

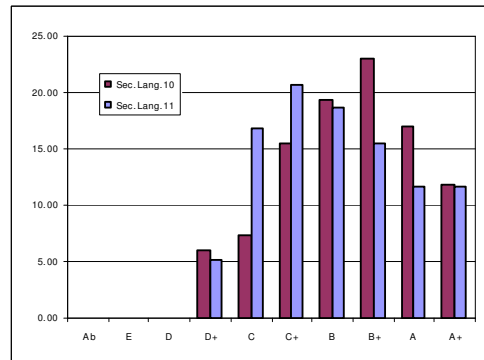
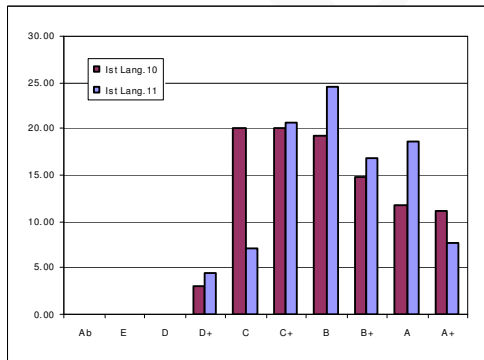
Grade	Ab	E	D	D+	C	C+	B	B+	A	A+	Total
Ist Lang.	0	0	0	7	11	32	38	26	29	12	155
Sec. Lang.	0	0	0	8	26	32	29	24	18	18	155
Eng.	0	0	2	45	45	26	15	15	7	0	155
Hindi	0	0	1	10	33	42	26	20	15	8	155
S S	0	0	18	57	42	20	9	4	5	0	155
Phy.	0	0	22	36	50	18	7	11	3	8	155
Chem.	0	0	4	64	44	17	10	9	5	2	155
Bio.	0	0	1	54	43	22	12	7	7	9	155
Maths	0	0	20	56	40	25	5	5	3	1	155
IT	1	0	1	0	0	0	8	57	57	32	155
Total	1	0	69	337	334	234	159	178	149	90	1550



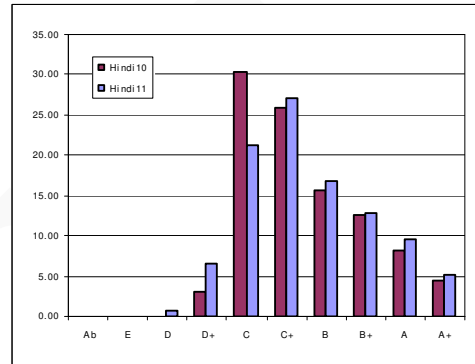
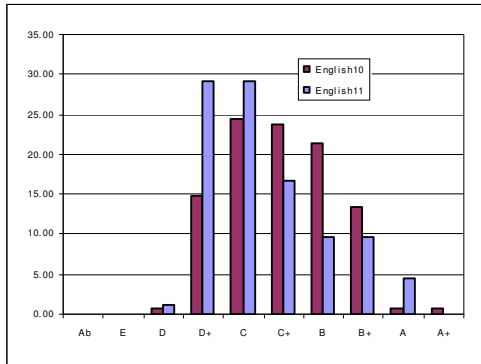
- Percentages of higher grades such as C+, B, B+ and A+ have decreased as compared to 2010. It shows decrease in quality in 2011.
- Pass percentage has decreased by 11 in 2011 as compared to 2010
- Fail percentage has increased in 2011 as compared to 2010.

SUBJECT WISE PERCENTAGE OF TOTAL GRADES

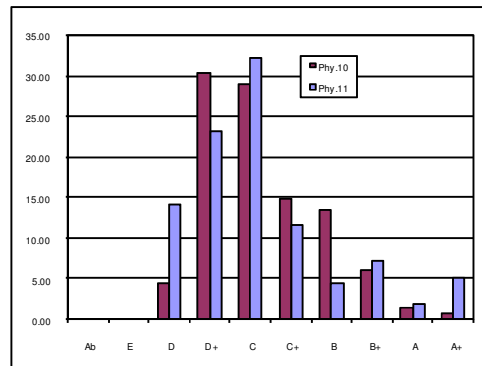
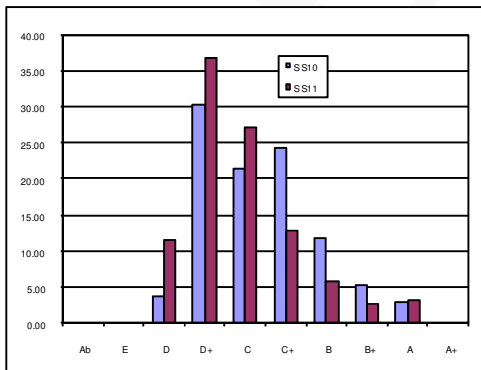
Grade	Ab	E	D	D+	C	C+	B	B+	A	A+
Ist Lang.10	0.00	0.00	0.00	2.96	20.00	20.00	19.26	14.81	11.85	11.11
Ist Lang.11	0.00	0.00	0.00	4.52	7.10	20.65	24.52	16.77	18.71	7.74
Sec.Lang.10	0.00	0.00	0.00	5.93	7.41	15.56	19.26	22.96	17.04	11.85
Sec.Lang.11	0.00	0.00	0.00	5.16	16.77	20.65	18.71	15.48	11.61	11.61



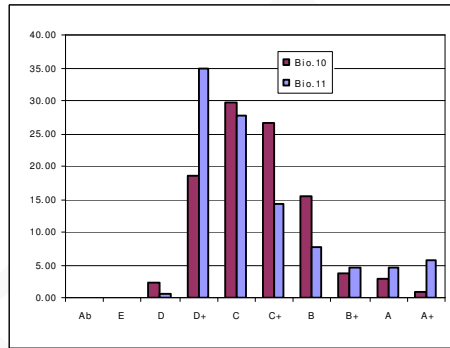
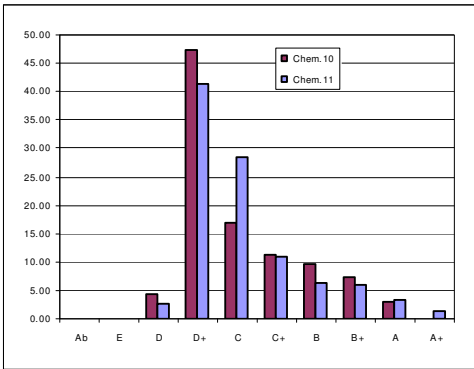
Grade	Ab	E	D	D+	C	C+	B	B+	A	A+
English10	0.00	0.00	0.74	14.81	24.44	23.70	21.48	13.33	0.74	0.74
English11	0.00	0.00	1.29	29.03	29.03	16.77	9.68	9.68	4.52	0.00
Hindi10	0.00	0.00	0.00	2.96	30.37	25.93	15.56	12.59	8.15	4.44
Hindi11	0.00	0.00	0.65	6.45	21.29	27.10	16.77	12.90	9.68	5.16



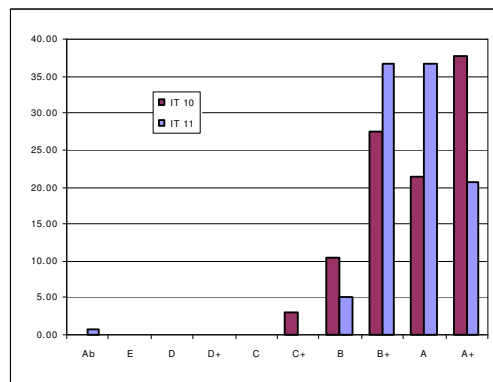
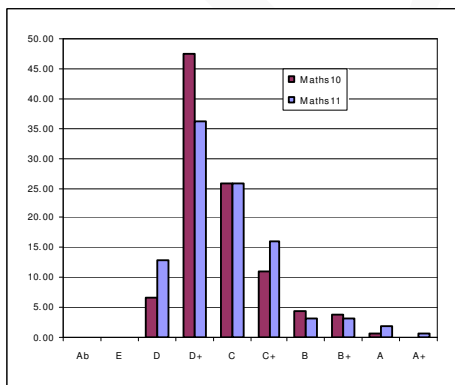
Grade	Ab	E	D	D+	C	C+	B	B+	A	A+
S S10	0.00	0.00	3.70	30.37	21.48	24.44	11.85	5.19	2.96	0.00
S S11	0.00	0.00	11.61	36.77	27.10	12.90	5.81	2.58	3.23	0.00
Phy.10	0.00	0.00	4.44	30.37	28.89	14.81	13.33	5.93	1.48	0.74
Phy.11	0.00	0.00	14.19	23.23	32.26	11.61	4.52	7.10	1.94	5.16



Grade	Ab	E	D	D+	C	C+	B	B+	A	A+
Chem.10	0.00	0.00	4.44	47.41	17.04	11.11	9.63	7.41	2.96	0.00
Chem.11	0.00	0.00	2.58	41.29	28.39	10.97	6.45	5.81	3.23	1.29
Bio.10	0.00	0.00	2.22	18.52	29.63	26.67	15.56	3.70	2.96	0.74
Bio.11	0.00	0.00	0.65	34.84	27.74	14.19	7.74	4.52	4.52	5.81



Grade	Ab	E	D	D+	C	C+	B	B+	A	A+
Maths10	0.00	0.00	6.67	47.41	25.93	11.11	4.44	3.70	0.74	0.00
Maths11	0.00	0.00	12.90	36.13	25.81	16.13	3.23	3.23	1.94	0.65
IT 10	0.00	0.00	0.00	0.00	0.00	2.96	10.37	27.41	21.48	37.78
IT 11	0.65	0.00	0.00	0.00	0.00	0.00	5.16	36.77	36.77	20.65



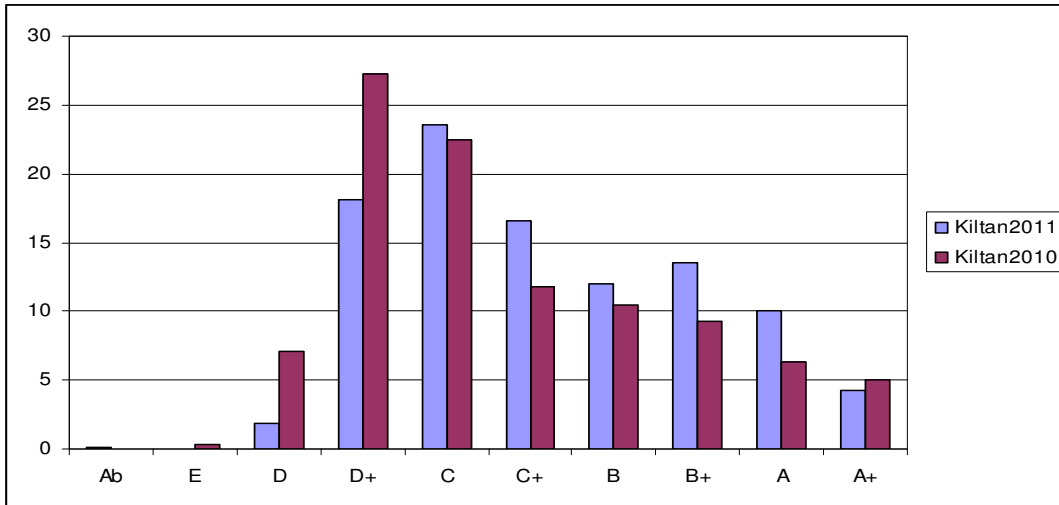
2.8 Govt. Sen. Sec. School KILTAN

MARCH 2010

Grade	E	D	D+	C	C+	B	B+	A	A+	Total
Ist Lang.	0	0	2	9	13	19	14	8	4	69
II Lang.	0	0	2	8	10	14	19	9	7	69
Eng.	0	1	35	19	6	5	2	1	0	69
Hindi	0	0	18	18	14	11	3	3	2	69
S S	1	12	24	17	7	4	4	0	0	69
Phy.	0	14	25	16	9	2	3	0	0	69
Chem.	0	4	29	27	7	1	0	1	0	69
Bio.	0	5	18	25	10	6	3	2	0	69
Maths	1	13	35	15	3	2	0	0	0	69
IT	0	0	0	1	2	8	16	20	22	69
Total	2	49	188	155	81	72	64	44	35	690

MARCH 2011

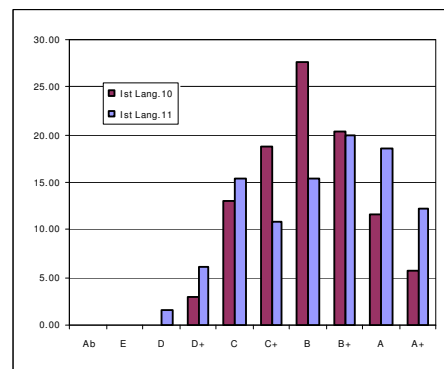
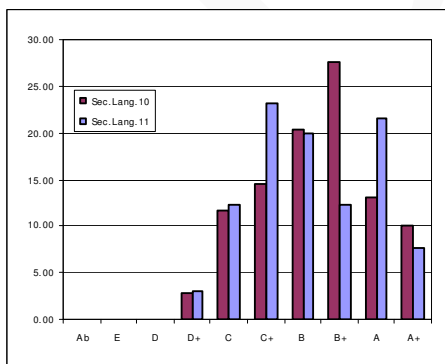
Grade	Ab	E	D	D+	C	C+	B	B+	A	A+	Total
Ist Lang.	0	0	1	4	10	7	10	13	12	8	65
Sec. Lang.	0	0	0	2	8	15	13	8	14	5	65
Eng.	0	0	1	20	25	11	6	0	2	0	65
Hindi	0	0	0	2	20	12	14	11	5	1	65
S S	0	0	2	31	17	11	2	2	0	0	65
Phy.	0	0	1	12	13	14	6	14	5	0	65
Chem.	0	0	1	21	24	14	3	1	1	0	65
Bio.	0	0	0	4	12	15	15	12	5	2	65
Maths	0	0	5	22	24	8	3	3	0	0	65
IT	1	0	1	0	0	1	6	24	21	12	65
Total	1	0	12	118	153	108	78	88	65	28	650



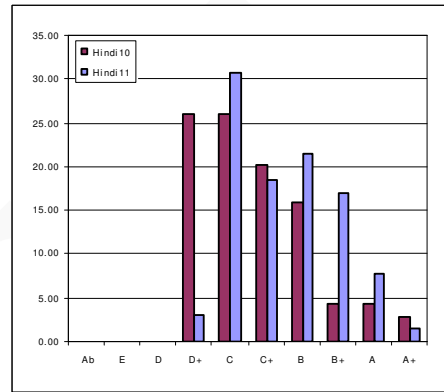
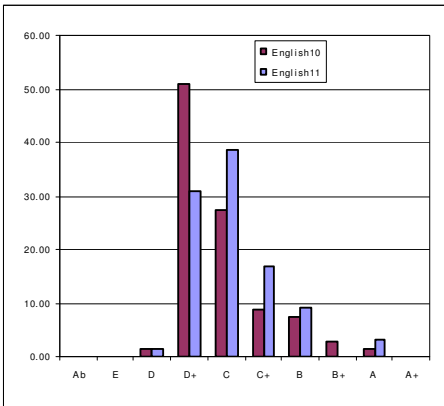
- Kiltan has highest pass percentage in 2011 as far as quantity is concerned.
- Percentages of higher grades such as C, C+, B, B+ and A have increased as compared to 2010. It shows increase in quality in 2011.
- Pass percentage has increased by 26.91 in 2011 as compared to 2010

SUBJECT WISE PERCENTAGE OF TOTAL GRADES

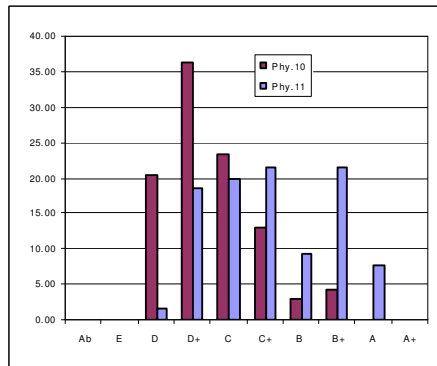
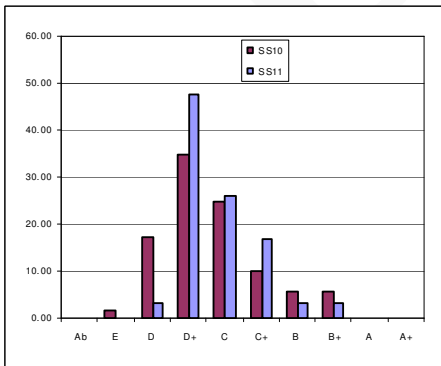
Grade	Ab	E	D	D+	C	C+	B	B+	A	A+
Ist Lang.10	0.00	0.00	0.00	2.90	13.04	18.84	27.54	20.29	11.59	5.80
Ist Lang.11	0.00	0.00	1.54	6.15	15.38	10.77	15.38	20.00	18.46	12.31
Sec.Lang.10	0.00	0.00	0.00	2.90	11.59	14.49	20.29	27.54	13.04	10.14
Sec.Lang.11	0.00	0.00	0.00	3.08	12.31	23.08	20.00	12.31	21.54	7.69



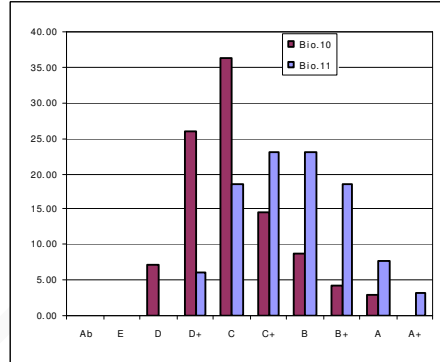
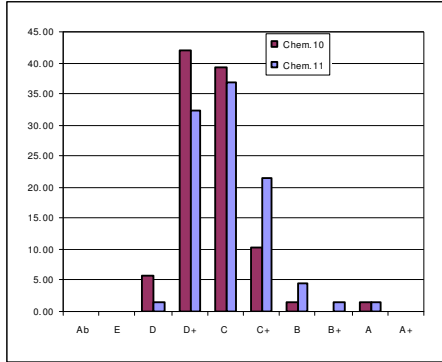
Grade	Ab	E	D	D+	C	C+	B	B+	A	A+
English10	0.00	0.00	1.45	50.72	27.54	8.70	7.25	2.90	1.45	0.00
English11	0.00	0.00	1.54	30.77	38.46	16.92	9.23	0.00	3.08	0.00
Hindi10	0.00	0.00	0.00	26.09	26.09	20.29	15.94	4.35	4.35	2.90
Hindi11	0.00	0.00	0.00	3.08	30.77	18.46	21.54	16.92	7.69	1.54



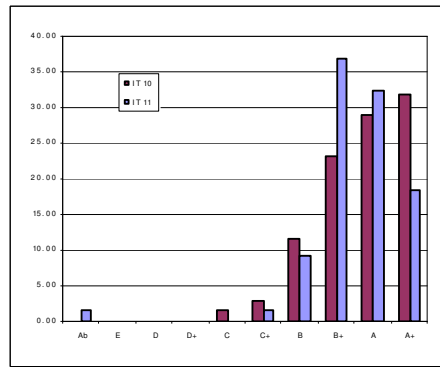
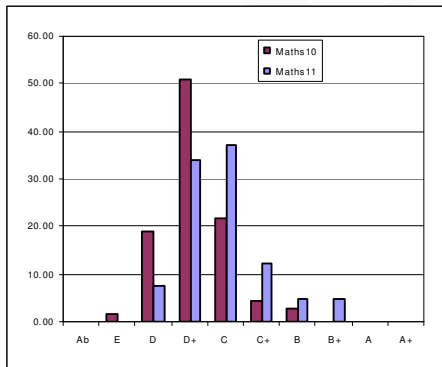
Grade	Ab	E	D	D+	C	C+	B	B+	A	A+
S S10	0.00	1.45	17.39	34.78	24.64	10.14	5.80	5.80	0.00	0.00
S S11	0.00	0.00	3.08	47.69	26.15	16.92	3.08	3.08	0.00	0.00
Phy.10	0.00	0.00	20.29	36.23	23.19	13.04	2.90	4.35	0.00	0.00
Phy.11	0.00	0.00	1.54	18.46	20.00	21.54	9.23	21.54	7.69	0.00



Grade	Ab	E	D	D+	C	C+	B	B+	A	A+
Chem.10	0.00	0.00	5.80	42.03	39.13	10.14	1.45	0.00	1.45	0.00
Chem.11	0.00	0.00	1.54	32.31	36.92	21.54	4.62	1.54	1.54	0.00
Bio.10	0.00	0.00	7.25	26.09	36.23	14.49	8.70	4.35	2.90	0.00
Bio.11	0.00	0.00	0.00	6.15	18.46	23.08	23.08	18.46	7.69	3.08



Grade	Ab	E	D	D+	C	C+	B	B+	A	A+
Maths10	0.00	1.45	18.84	50.72	21.74	4.35	2.90	0.00	0.00	0.00
Maths11	0.00	0.00	7.69	33.85	36.92	12.31	4.62	4.62	0.00	0.00
IT 10	0.00	0.00	0.00	0.00	1.45	2.90	11.59	23.19	28.99	31.88
IT 11	1.54	0.00	0.00	0.00	0.00	1.54	9.23	36.92	32.31	18.46



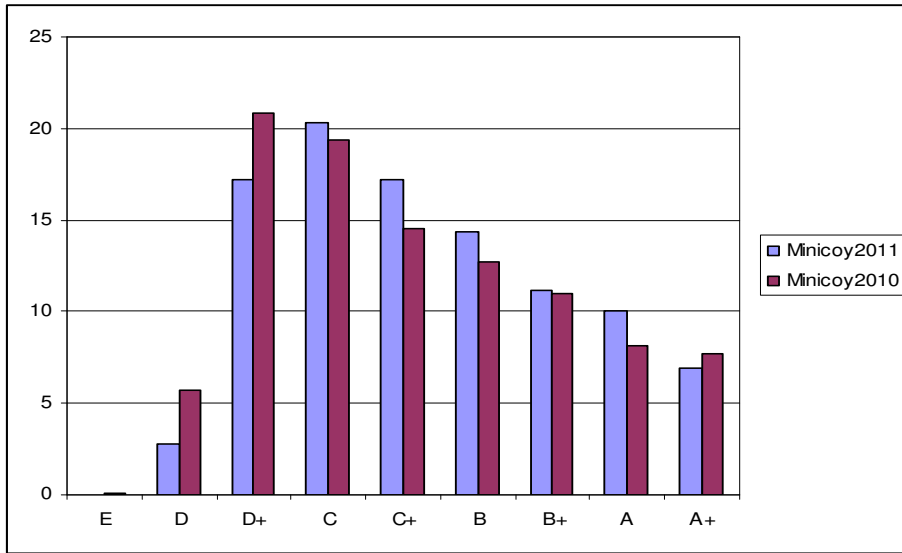
2.9 Govt. Sen. Sec. School MINICOY

MARCH 2010

Grade	E	D	D+	C	C+	B	B+	A	A+	Total
Ist Lang.	0	1	1	10	25	41	35	28	17	158
II Lang.	0	14	39	36	23	10	8	13	15	158
Eng.	0	0	14	32	29	24	27	23	9	158
Hindi	0	0	7	23	27	26	22	14	39	158
S S	0	19	60	36	18	8	9	7	1	158
Phy.	1	22	66	30	15	12	7	3	2	158
Chem.	0	13	44	50	23	14	4	7	3	158
Bio.	0	6	45	45	28	13	7	7	7	158
Maths	0	15	53	44	18	13	7	3	5	158
IT	0	0	0	0	24	40	47	23	24	158
Total	1	90	329	306	230	201	173	128	122	1580

MARCH 2011

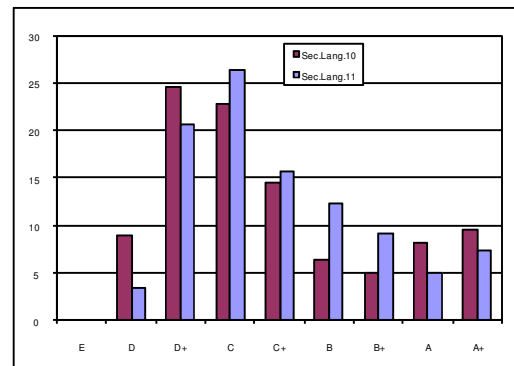
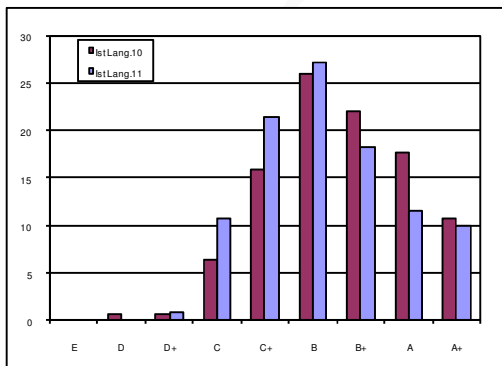
Grade	E	D	D+	C	C+	B	B+	A	A+	Total
Ist Lang.	0	0	1	13	26	33	22	14	12	121
Sec. Lang.	0	4	25	32	19	15	11	6	9	121
English	0	0	9	22	14	29	26	9	12	121
Hindi	0	0	3	9	18	32	29	9	21	121
S S	0	15	32	28	27	14	3	2	0	121
Phy.	0	7	23	26	39	16	8	2	0	121
Chem.	0	0	35	37	29	12	5	2	1	121
Bio.	0	0	37	40	19	13	6	4	2	121
Maths	0	8	43	39	17	10	1	2	1	121
IT	0	0	0	0	0	0	24	71	26	121
Total	0	34	208	246	208	174	135	121	84	1210



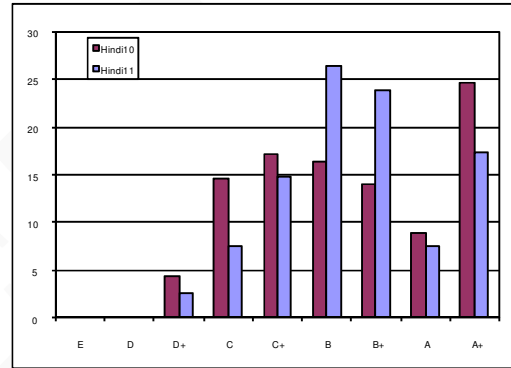
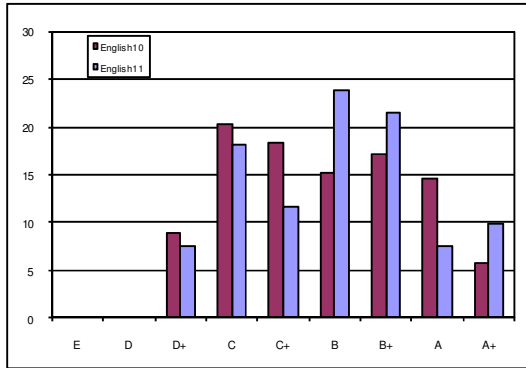
- Percentages of higher grades such as C, C+, B, B+ and A have increased as compared to 2010. It shows increase in quality in 2011.
- Pass percentage has increased by 8.26 in 2011 as compared to 2010

SUBJECT WISE PERCENTAGE OF TOTAL GRADES

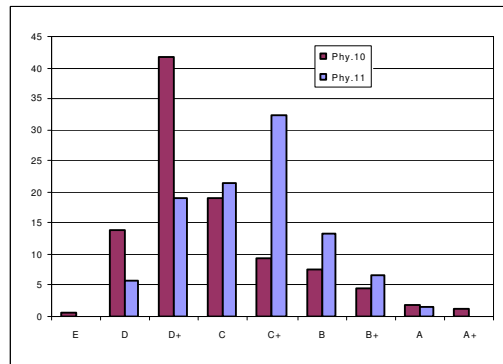
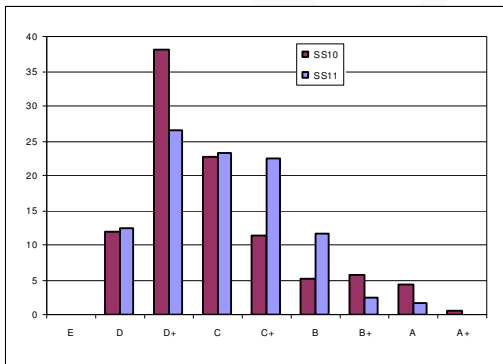
Grade	E	D	D+	C	C+	B	B+	A	A+
Ist Lang.10	0	0.63	0.63	6.33	15.8	25.9	22.2	17.7	10.8
Ist Lang.11	0	0	0.83	10.7	21.5	27.3	18.2	11.6	9.92
Sec.Lang.10	0	8.86	24.7	22.8	14.6	6.33	5.06	8.23	9.49
Sec.Lang.11	0	3.31	20.7	26.4	15.7	12.4	9.09	4.96	7.44



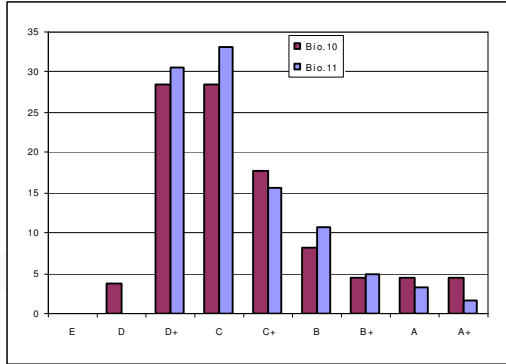
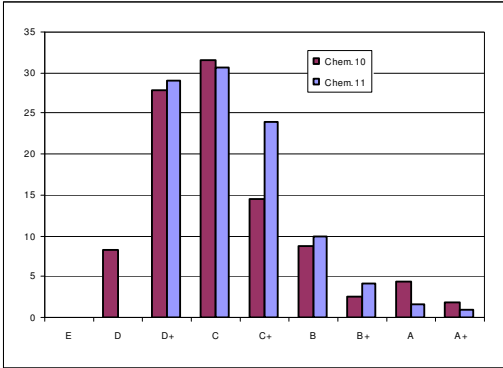
Grade	E	D	D+	C	C+	B	B+	A	A+
English10	0	0	8.86	20.3	18.4	15.2	17.1	14.6	5.7
English11	0	0	7.44	18.2	11.6	24	21.5	7.44	9.92
Hindi10	0	0	4.43	14.6	17.1	16.5	13.9	8.86	24.7
Hindi11	0	0	2.48	7.44	14.9	26.4	24	7.44	17.4



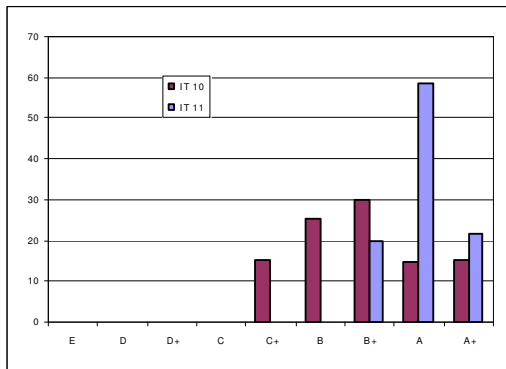
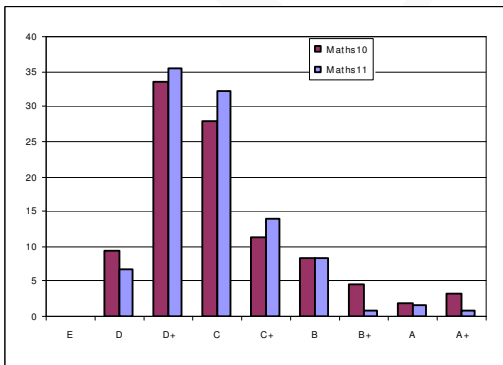
Grade	E	D	D+	C	C+	B	B+	A	A+
SS10	0	12	38	22.8	11.4	5.06	5.7	4.43	0.63
SS11	0	12.4	26.4	23.1	22.3	11.6	2.48	1.65	0
Phy.10	0.63	13.9	41.8	19	9.49	7.59	4.43	1.9	1.27
Phy.11	0	5.79	19	21.5	32.2	13.2	6.61	1.65	0



Grade	E	D	D+	C	C+	B	B+	A	A+
Chem.10	0	8.23	27.8	31.6	14.6	8.86	2.53	4.43	1.9
Chem.11	0	0	28.9	30.6	24	9.92	4.13	1.65	0.83
Bio.10	0	3.8	28.5	28.5	17.7	8.23	4.43	4.43	4.43
Bio.11	0	0	30.6	33.1	15.7	10.7	4.96	3.31	1.65



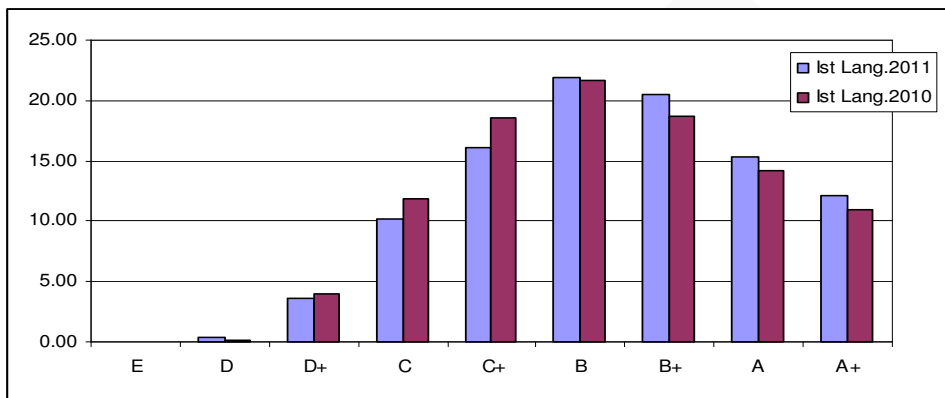
Grade	E	D	D+	C	C+	B	B+	A	A+
Maths10	0	9.49	33.5	27.8	11.4	8.23	4.43	1.9	3.16
Maths11	0	6.61	35.5	32.2	14	8.26	0.83	1.65	0.83
IT 10	0	0	0	0	15.2	25.3	29.7	14.6	15.2
IT 11	0	0	0	0	0	0	19.8	58.7	21.5



3. SUBJECT WISE ANALYSIS, GRAPHS AND INTERPRETATIONS

3.1 FIRST LANGUAGE

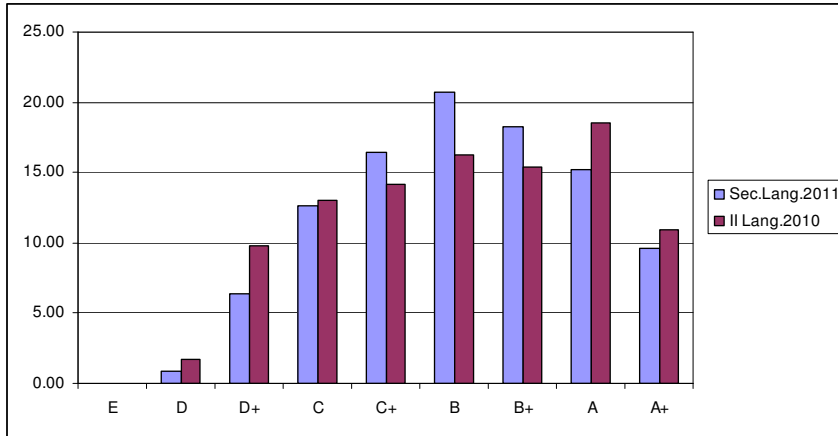
Grade	E	D	D+	C	C+	B	B+	A	A+
Ist Lang.2011	0	4	38	107	169	231	216	161	127
Ist Lang.2010	0	2	45	135	212	247	213	162	125
In % 2011	0.00	0.38	3.61	10.16	16.05	21.94	20.51	15.29	12.06
In % 2010	0.00	0.18	3.94	11.83	18.58	21.65	18.67	14.20	10.96



- Major percentage of the students scored B grade in 2010 and 2011. It shows a consistency in the result.
- All the higher grades from B to A+ have increased. It shows the quality of first language in Lakshadweep schools is increased.

3.2 SECOND LANGUAGE (MALAYALM II)

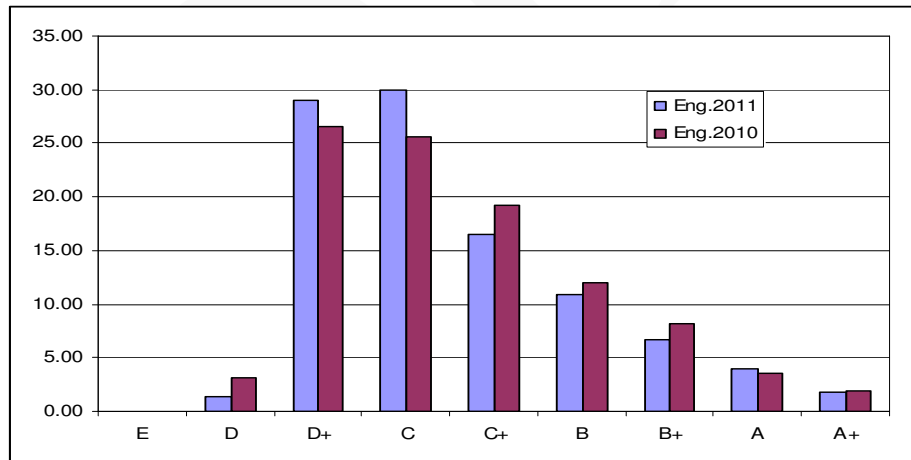
Grade	E	D	D+	C	C+	B	B+	A	A+
Sec.Lang.2011	0	9	67	133	173	218	192	160	101
II Lang.2010	0	20	112	149	162	186	176	211	125
In % 2011	0.00	0.85	6.36	12.63	16.43	20.70	18.23	15.19	9.59
In % 2010	0.00	1.75	9.82	13.06	14.20	16.30	15.43	18.49	10.96



- Major percentage of the students scored A grade in 2010 and B grade in 2011. It shows decrease in quality of second language in 2011.

3.3 ENGLISH

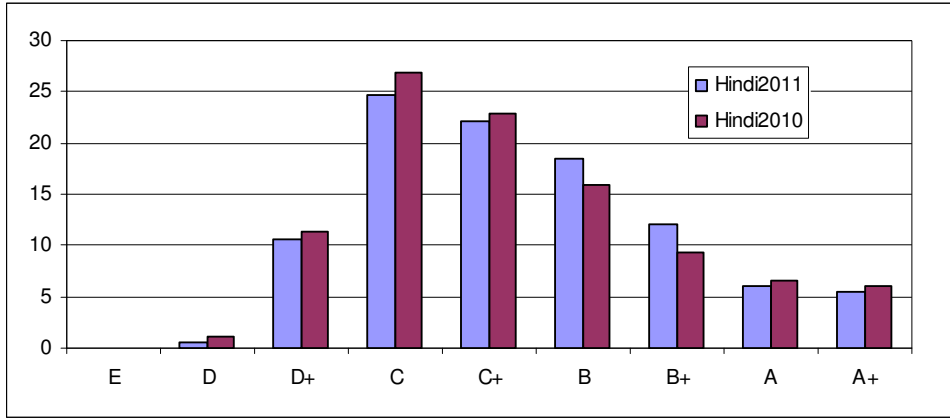
Grade	E	D	D+	C	C+	B	B+	A	A+
Eng.2011	0	14	305	316	173	115	70	41	19
Eng.2010	0	35	303	292	219	136	94	41	21
In % 2011	0.00	1.33	28.96	30.01	16.43	10.92	6.65	3.89	1.80
In % 2010	0.00	3.07	26.56	25.59	19.19	11.92	8.24	3.59	1.84



- The percentage of D+ grade was the highest in 2010 while C grade is the highest in 2011. It shows a slight shift of the graph from the -ve side to the +ve side.
- Total fail percentage has decreased in 2011.

3.4 HINDI

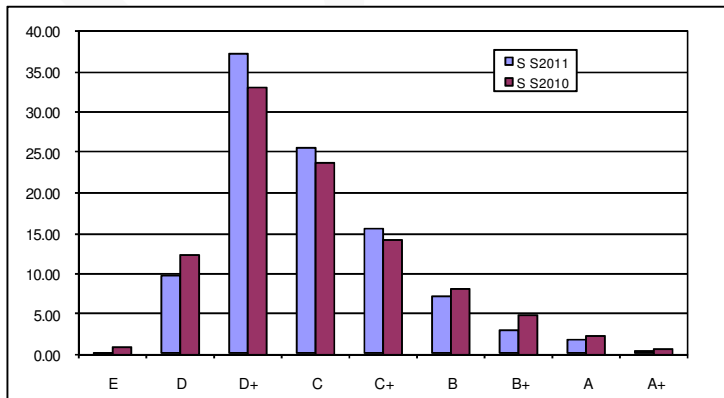
Grade	E	D	D+	C	C+	B	B+	A	A+
Eng.2011	0	14	305	316	173	115	70	41	19
Eng.2010	0	35	303	292	219	136	94	41	21
In % 2011	0	0.5698	10.541	24.786	22.222	18.424	12.061	5.9829	5.4131
In % 2010	0	1.0517	11.306	26.906	22.787	15.951	9.3777	6.5732	6.0473



- Major percentage of the students scored C grade in 2010 and 2011. It shows a consistency in the results

3.5 SOCIAL SCIENCE

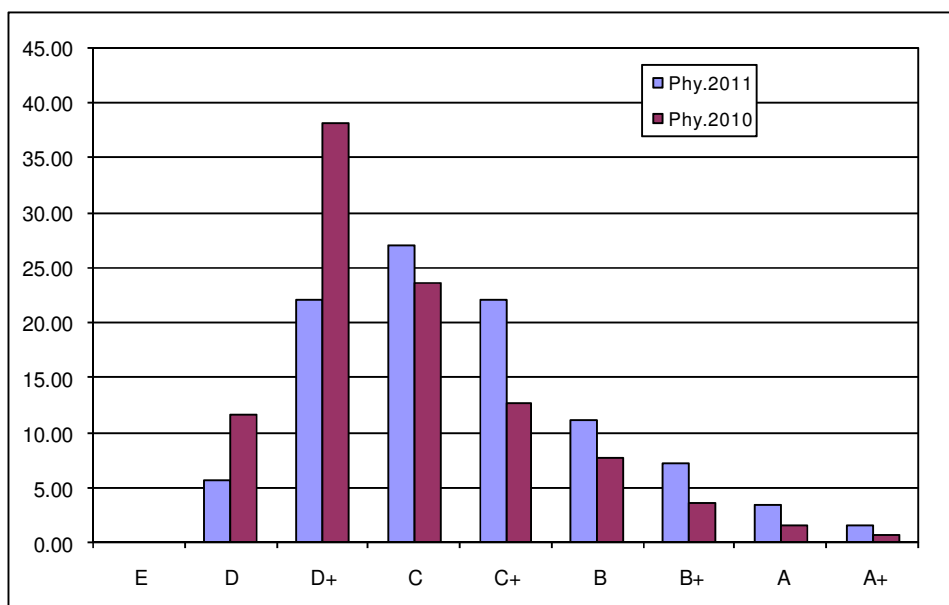
Grade	E	D	D+	C	C+	B	B+	A	A+
S S2011	1	102	391	270	162	74	30	19	4
S S2010	10	140	377	270	161	93	55	27	8
In % 2011	0.09	9.69	37.13	25.64	15.38	7.03	2.85	1.80	0.38
In % 2010	0.88	12.27	33.04	23.66	14.11	8.15	4.82	2.37	0.70



- B, B+, A and A+ grades have decreased in 2011. It shows decrease in quality
- D+ grade has increased in 2011
- Though the fail percentage has decreased, there is no quality in the result.
- Total fail percentage has decreased in 2011.

3.6 PHYSICS

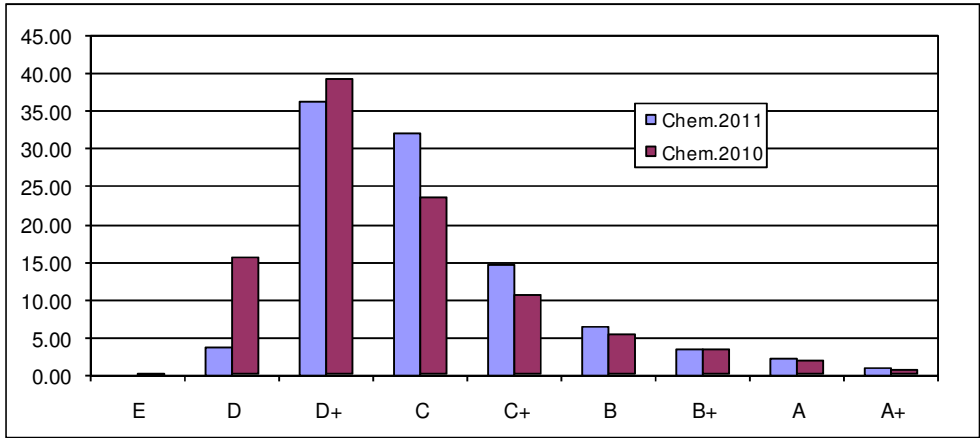
Grade	E	D	D+	C	C+	B	B+	A	A+
Phy.2011	0	59	232	284	233	117	76	36	16
Phy.2010	1	134	435	269	146	88	42	18	8
In % 2011	0.00	5.60	22.03	26.97	22.13	11.11	7.22	3.42	1.52
In % 2010	0.09	11.74	38.12	23.58	12.80	7.71	3.68	1.58	0.70



- The higher grades such as C+, B, B+, A, and A+ have increased in 2011. It shows increase in the quality.
- Fail percentage has decreased
- The percentage of D+ grade was the highest in 2010, while C grade is the highest in 2011. It shows a shift of graph from -ve side to +ve side.

3.7 CHEMISTRY

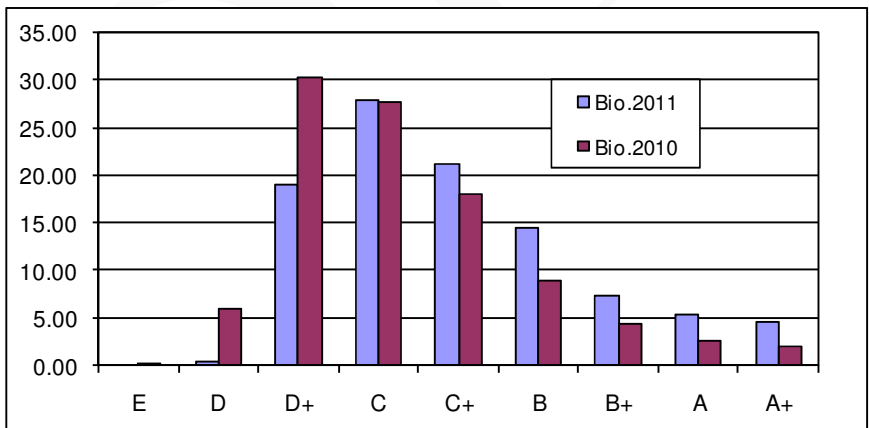
Grade	E	D	D+	C	C+	B	B+	A	A+
Chem.2011	0	40	383	338	154	68	36	23	11
Chem.2010	1	177	449	269	120	60	37	21	7
In % 2011	0.00	3.80	36.37	32.10	14.62	6.46	3.42	2.18	1.04
In % 2010	0.09	15.51	39.35	23.58	10.52	5.26	3.24	1.84	0.61



- The percentage of higher grade such as C+, B, B+, A, and A+ have increased in 2011. It shows the raise in quality.
- Fail percentage has decreased a lot.

3.8 BIOLOGY

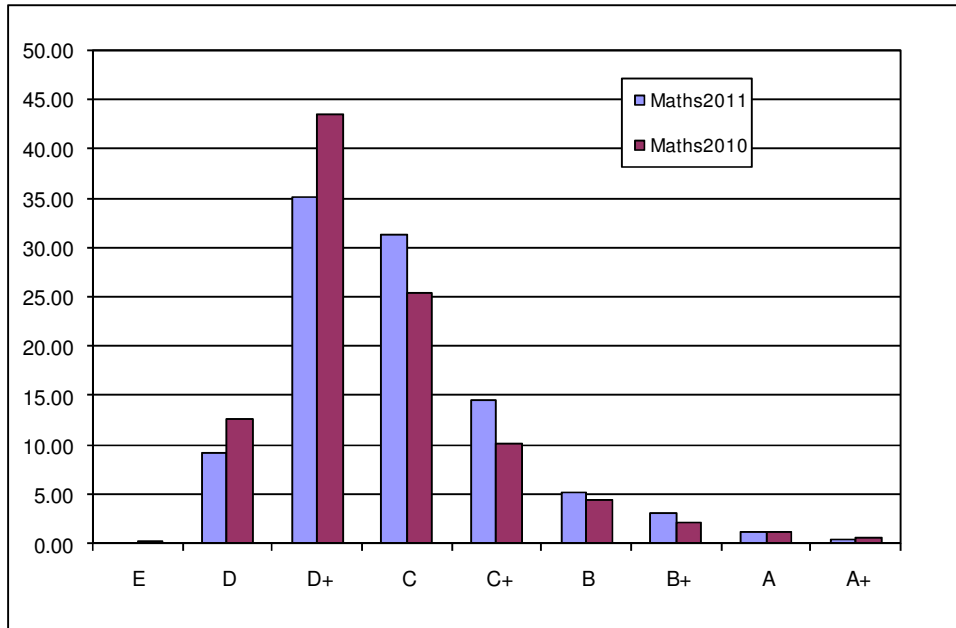
Grade	E	D	D+	C	C+	B	B+	A	A+
Bio.2011	0	4	200	294	222	151	78	57	47
Bio.2010	2	68	346	316	206	101	50	30	22
In % 2011	0.00	0.38	18.99	27.92	21.08	14.34	7.41	5.41	4.46
In % 2010	0.18	5.96	30.32	27.70	18.05	8.85	4.38	2.63	1.93



- The percentage of grades such as C+, B, B+, A and A+ have increased in 2011. It shows the raise in quality.
- The D+ grade was the highest in 2010 while the C grade is the highest in 2011. It shows a shift of graph from -ve side to +ve side.
- Fail percentage has decreased in 2011.

3.9 MATHEMATICS

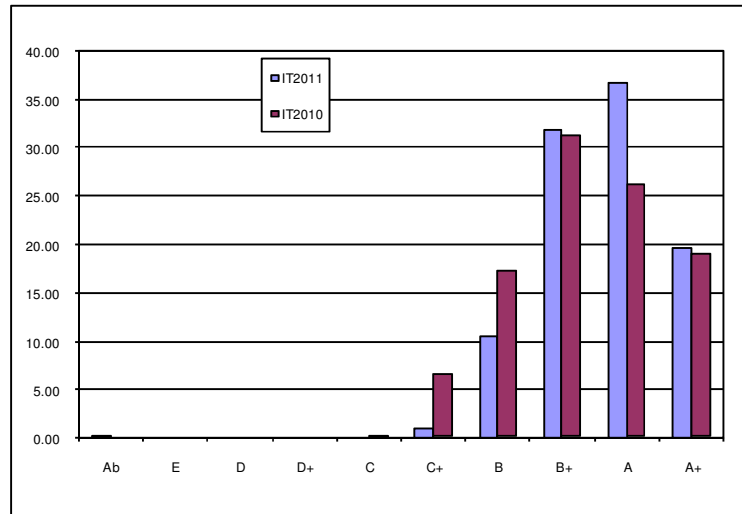
Grade	E	D	D+	C	C+	B	B+	A	A+
Maths2011	0	97	370	330	152	55	33	12	4
Maths2010	2	144	496	290	115	51	24	12	7
In % 2011	0.00	9.21	35.14	31.34	14.43	5.22	3.13	1.14	0.38
In % 2010	0.18	12.62	43.47	25.42	10.08	4.47	2.10	1.05	0.61



- The percentage of grades such as C+, B, B+ and A have increased I 2011. It shows the raise in quality.
- Pass percentage has decreased.
- D+ is the highest pass percentage in both 2010 and 2011.

3.10 INFORMATION TECHNOLOGY (IT)

Grade	Ab	E	D	D+	C	C+	B	B+	A	A+
IT2011	2	0	0	0	0	11	110	336	387	207
IT2010	0	0	0	0	1	74	196	356	298	216
In % 2011	0.19	0.00	0.00	0.00	0.00	1.04	10.45	31.91	36.75	19.66
In % 2010	0.00	0.00	0.00	0.00	0.09	6.49	17.18	31.20	26.12	18.93



- The percentage of higher grades such as C+, B, B+, A and A+ have increased in 2011. It shows the raise in quality.
- The B+ was the highest grade in 2010 while A grade is the highest in 2011. It shows a shift of graph from left hand side to right hand side.

4. OVERALL PERFORMANCE OF SCHOOLS

TOTAL GRADE 2010

Grade	E	D	D+	C	C+	B	B+	A	A+
Agathi	0	86	426	349	212	176	144	91	36
Amini	13	313	586	309	236	190	111	70	42
Androth	0	66	430	437	330	250	241	251	165
Chetlath	0	25	120	112	59	48	47	34	25
Kadmat	0	36	235	212	165	125	124	117	46
Kalpeni	0	37	107	141	124	88	92	65	46
Kavarathi	0	30	271	277	238	190	158	95	91
Kiltan	2	49	188	155	81	72	64	44	35
Minicoy	1	90	329	306	230	201	173	128	122
Total	16	732	2692	2298	1675	1340	1154	895	608

TOTAL GRADE 2011

Grade	E	D	D+	C	C+	B	B+	A	A+
Agatti	0	49	276	290	177	118	114	87	29
Amini	1	59	332	307	230	244	165	83	59
Androth	0	52	368	515	412	305	281	205	142
Chetlat	0	5	53	63	39	34	30	30	16
Kadmat	0	42	219	241	206	152	132	127	61
Kalpeni	0	13	131	142	103	97	99	101	84
Kavaratti	0	68	337	334	234	159	178	149	90
Kiltan	0	11	118	153	108	78	88	65	28
Minicoy	0	34	208	246	208	174	135	121	84
Total	1	335	2042	2291	1717	1361	1222	968	593

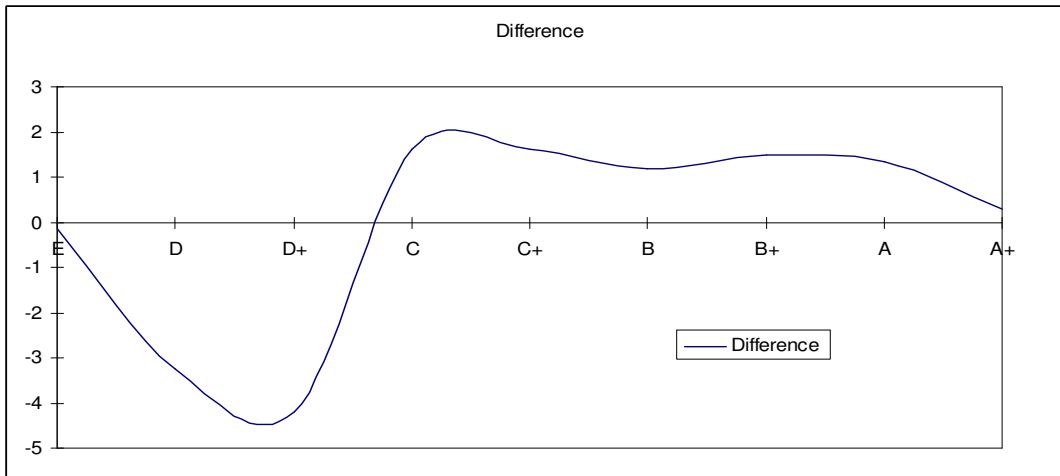
Total Grade	E	D	D+	C	C+	B	B+	A	A+
2010	16	732	2692	2298	1675	1340	1154	895	608
2011	1	335	2042	2291	1717	1361	1222	968	593
% in 2010	0.1402	6.4154	23.593	20.14	14.68	11.744	10.114	7.844	5.3287
% in 2011	0.0095	3.1814	19.392	21.757	16.306	12.925	11.605	9.1928	5.6315



(Grade wise quality assessment)

- The percentage of D+ grade was the highest in 2010 while the C grade is the highest in 2011. It shows a shift of graph from –ve side to +ve side.
- The percentage of higher grades such as C+, B, B+, A and A+ have increased in 2011. It shows the raise in quality.

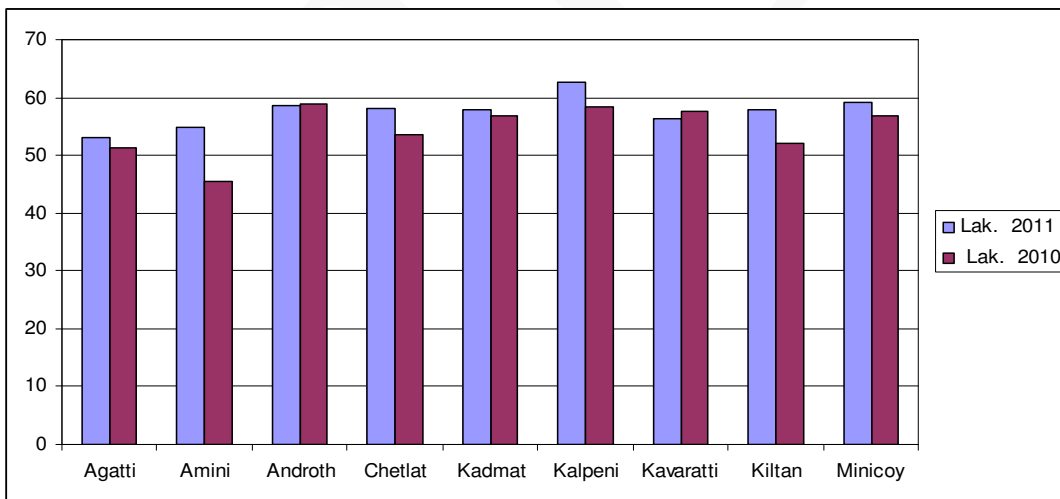
Total Grade	E	D	D+	C	C+	B	B+	A	A+
2010	16	732	2692	2298	1675	1340	1154	895	608
% in 2010	0.14	6.42	23.59	20.14	14.68	11.74	10.11	7.84	5.33
2011	1	335	2042	2291	1717	1361	1222	968	593
% in 2011	0.01	3.18	19.39	21.76	16.31	12.93	11.61	9.19	5.63
Difference	-0.13	-3.23	-4.20	1.62	1.63	1.18	1.49	1.35	0.30



(Difference in percentage of total grades between 2010 and 2011)

- Total percentage of higher grades such as C, C+, B, B+, A, and A+ have increased in 2011 as compared with 2010. It shows changes of quality towards +ve side.
- Lower grades D+, D and E have decreased

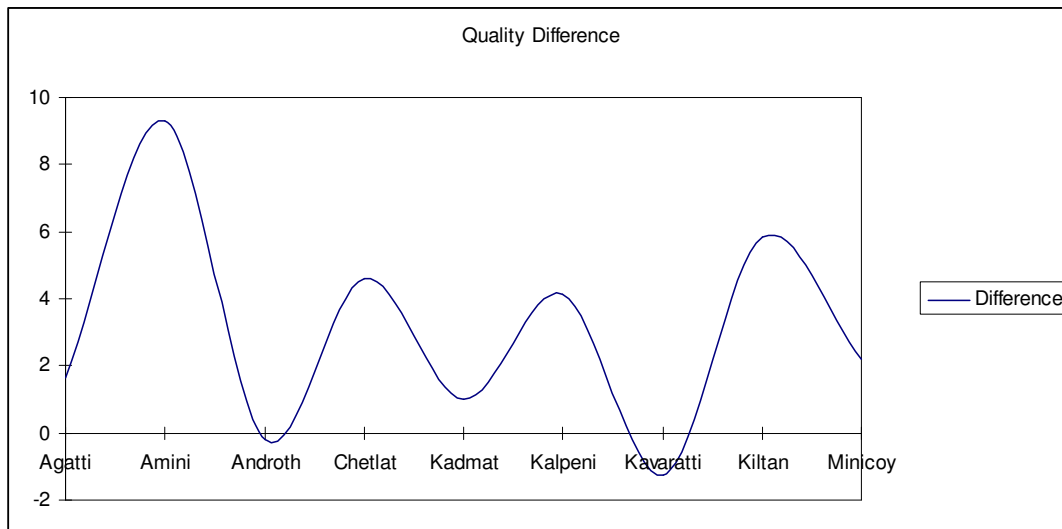
ISLAND	Agatti	Amini	Androth	Chetlat	Kadmat	Kalpeni	Kavaratti	Kiltan	Minicoy
Lak. 2011	52.96	54.86	58.69	58.19	57.78	62.64	56.34	57.94	59.04
Lak. 2010	51.33	45.56	58.88	53.59	56.79	58.49	57.58	52.11	56.83



(Island Position in quality base assessment – 2010 and 2011)

- Dr. K.K.M.K Govt. S. S. School Kalpeni stands in the first position in quality based assessment in 2011. Govt. High School Androth topped in 2010.
- Govt. S.S. School Agatti stands in lowest position in quality based assessment in 2011 and Govt. S.S. School Amini was in the last position in 2010.
- Govt. High School Androth stands Second Position in quality based assessment in 2011 and Kalpeni was in 2010.

ISLAND	Agatti	Amini	Androth	Chetlat	Kadmat	Kalpeni	Kavaratti	Kiltan	Minicoy
Lak. 2011	52.96	54.86	58.69	58.19	57.78	62.64	56.34	57.94	59.04
Lak. 2010	51.33	45.56	58.88	53.59	56.79	58.49	57.58	52.11	56.83
Difference	1.63	9.3	-0.19	4.6	0.99	4.15	-1.24	5.83	2.21



- The above graph shows that, the majority of schools have showed increase in quality in 2011 as compared to 2010, except Govt. High School Androth and Govt. S.S. School Kavaratti.
- Govt. S.S. School Amini showed the highest +ve difference in quality as compared to 2010.